

1967
THRESHER



Digitized by the Internet Archive
in 2015

https://archive.org/details/thresher00unse_19



MRS. J. WILKINSON WILSON



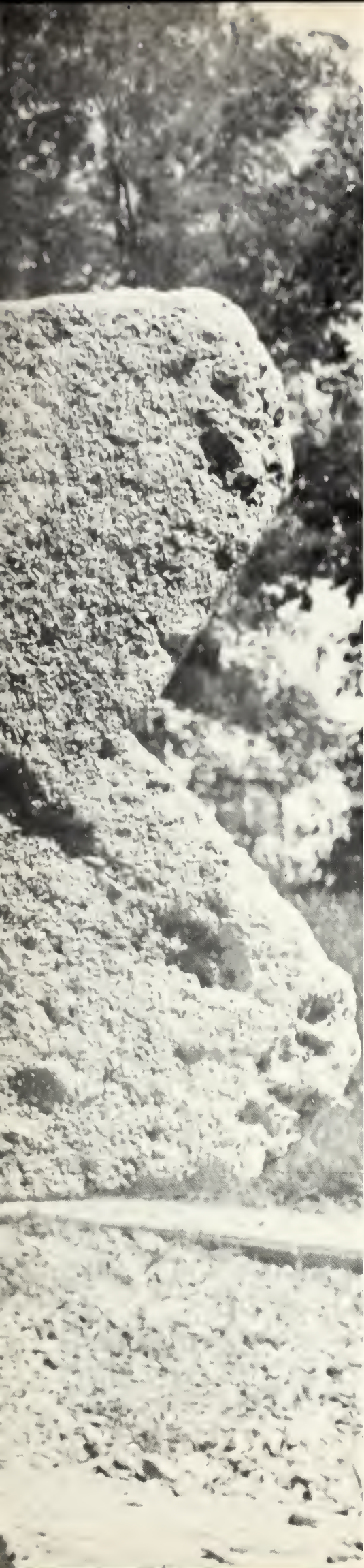






PATTERNS OF '67





1967 THRESHER

Bethel College
North Newton, Kansas

Ann L. van der Weg, Editor



Prior to the inauguration, Dr. Vernon Neufeld discusses presidential duties with future president, Dr. Orville Voth.

President and Mrs. Neufeld could frequently be seen at special student-faculty banquets.



Dedication

Serving as Bethel's president for six and one-half years, Dr. Vernon Neufeld contributed to a number of improvements during his administration. Two dormitory additions and the Fine Arts Center were built, student-faculty communications were improved, a new charter was written, a future building program was drawn up and a self-study was initiated.

Dr. Neufeld graduated from Bethel in 1949, after which he received his Th.D. degree from Princeton Theological Seminary. He returned to Bethel as professor of Bible in 1959, becoming Bethel's seventh president in 1960.

On January 1, of this year, Dr. Neufeld stepped down from the presidency to assume responsibilities as director of Mennonite Mental Health Services.

We consider it a privilege to have had you as president, and it is with deep-felt gratitude that we dedicate to you the 1967 *Thresher*.

Serving Bethel as president for six and one-half years, Dr. Neufeld stepped down from the presidency January 1, to assume duties as director of Mennonite Mental Health Services.

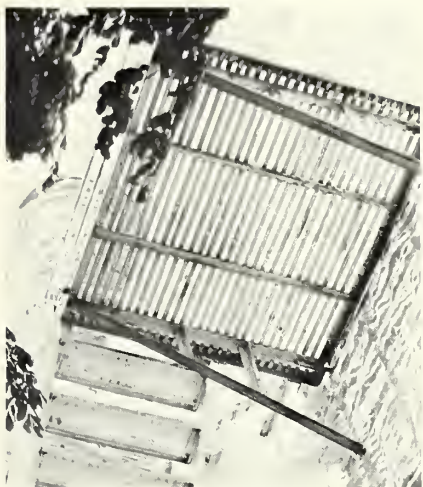


CONTENTS



Introduction	1
Features	12
Sports	56
Organizations	74
Administration	100
Students	116





Patterns of '67

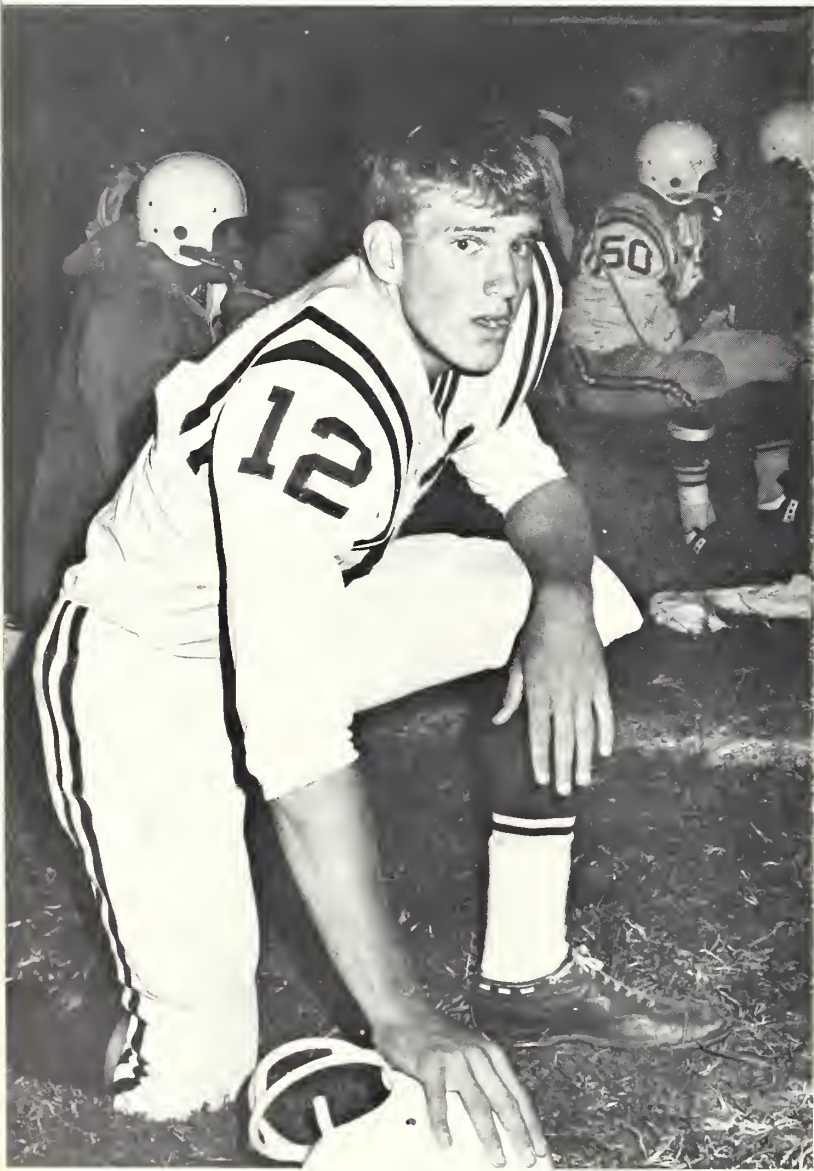




Look around you. Patterns are everywhere. Some patterns are obvious, as the division pages in this yearbook show—piano strings for features, nets for sports, a view of the administration building for academics, chair legs for organization, and caps of graduates for students. Other patterns are more subtle, shaping the memories of Bethel College.

The Peace Walk, telelectures, seminars, chapel periods, discussions on student freedom, choir tours, final exams, all these and many more, make up a pattern which cannot be erased easily from a Bethelite's mind.

The 1967 Thresher emphasizes patterns—those that are obvious and say, "Look, this is Bethel" and those that say not so obviously, "Bethel is a part of us, and we like it."









Over 600 students enroll during 1966-67 school year

The new school year started with great enthusiasm on the part of the large freshman class, as well as the three upper grades. A record enrollment of 606 students registered for classes in the fall. Freshmen numbered 202, sophomores 155, juniors 92, and seniors 105.

President Neufeld welcomed new students to Bethel at the annual opening of school in Memorial Hall. A student-faculty tea was held for freshmen in the Student Union.

Besides saying goodbye to parents and meeting new friends, freshmen were introduced to rituals of initiation, saw the production, "Dinny and the Witches," and were invited to a retreat for forming Student Christian Fellowship seminars.



This is the way some students load their luggage.

A familiar sight on campus the first day of school was the unloading of suitcases.



Freshmen pick up registration materials in Memorial Hall to prepare for their first classes in college.





Freshmen enjoy the faculty-student tea in the Student Union. It was a good time for meeting new friends.

The dramatic production, "Dinny and the Witches," which had been presented as part of the summer theater workshop, was again presented for students the first week of school.





Students are instructed to various cars prior to going to Harvey County Park for the SCF Retreat.

There's not really a leaky roof in the dining hall. It's just the freshmen being initiated.



Fall activities vary, October offers open house

The beginning months of school offered a variety of activities. In September new students were initiated and a retreat to inform students of the Student Christian Fellowship was held at Harvey County Park.

October, always a busy time in the year, also provided an unusually exciting program of activities. The highlight of the month was Founder's Day on October 9. Campus buildings were open for visitation, and an informal time was scheduled during the supper hour for the parents and students to meet the faculty. Also on that day the Gustav Dunkelberger Memorial was dedicated. A recital on the Steinway concert grand piano, part of the memorial, was given by Celia Goering, part-time music instructor.



Happy faces could be seen during open house when parents and friends of students were invited to visit the student dormitories.

A view from the Women's Residence Hall shows that it was again a perfect day weatherwise on Founder's Day.

Doors like this one could be seen in Women's Residence Hall. This particular door reads, "Thank goodness for People."





Queen Carita Preheim



Carita experiences the first thrills of being queen as she is being crowned by Stuco president, Larry D. Friesen.

Stan Voth of the football squad hands Carita a white football.



Besides playing the piano and organ, Carita also sang in various choral groups on campus.

Homecoming queen Carita fancies opera, music

This year's Homecoming queen, Carita Preheim of Marion, S. D., was crowned amid the colonial props reminiscent of the theme of "Powdered Wigs—Plum Pudding."

Since returning to Bethel after completion of nurses training at Bethel Hospital, Carita participated in various opera productions. She was also kept busy as president of Women's Residence Hall and as a resident assistant, as well as singing with the Madrigals and College Choir.



Attendants Diane Gering, Elizabeth Becker



Attendants Diane (Stucky) Gering and Elizabeth Becker receive their royal robes from the football captains.

Beaming queen and attendants receive congratulations from the student body after the crowning ceremony.





Homecoming queen candidates are from left to right: Ethel Stucky, Carita Preheim, Diane Gering, Elizabeth Becker, Eileen Senner, and Marianne Krahn.

The winning Homecoming float was made by the non-dormers.



Fall quarter features art shows, one-act plays

Two art exhibits were up during fall quarter. The first one featured works of one of the best known watercolor painters in this region—Charles Sanderson of Wichita. The second show included a large amount of art and artifacts in the possession of the College. Included were examples from the "Golden Age" of Dutch art, the 17th century.

The drama department had a chance to show its talent in several one-act plays. A picture of the presentation of Edward Albee's "Zoo Story" is shown below.



Students admire one of Charles Anderson's Midwest landscapes.

Jim Stucky and Craig Challender act out Albee's "Zoo Story."



"Old Maid and the Thief," "Gianni Schicchi" are hits

Staging experiments and difficult music marked the one-act operas "Gianni Schicchi" and "The Old Maid and the Thief." The productions were given in Krehbiel Auditorium in October and were directed by Arlo Kasper, professor in drama, and Dr. Walter Jost, professor in music.

"Gianni Schicchi" dealt with the writing of a will. Buoso Donati upsets his relatives a great deal by leaving his large estate to charity upon his death. The local rogue, Gianni Schicchi is called in to turn the events by posing as Donati and writing a new will.

"The Old Maid and the Thief" dealt with a middle-aged spinster who allows a handsome beggar, but supposed criminal, to spend a night in her home.



The middle-aged spinster Miss Todd and her gossipy friend Miss Pinkerton.

Miss Todd and her servant Laetitia admire their overnight guest Bob who later falls in love with Laetitia and elopes with her.





Gianni Schicchi poses as the dead Donati to fool the lawyer in order to change the will.

Schicchi and his future son-in-law and daughter. The new will Schicchi formulates is in favor of the two young people and himself and not Donati's relatives.



Since the music was difficult, Dr. Jost did not always have restful moments as this picture shows.

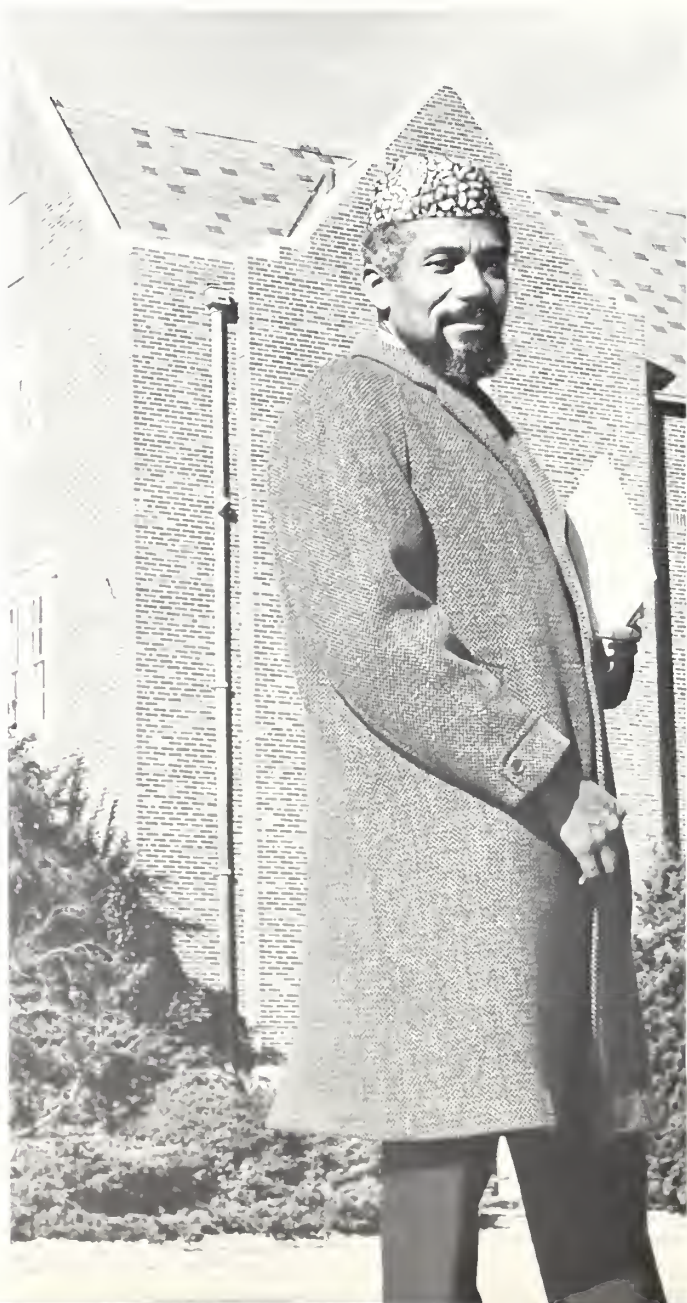


Mennonite history, Africa lectures are stimulating

A Dutch pastor, Rev. J. P. Jacobszoon, and a retired professor of world history and philosophy, Dr. Robert Friedmann, delivered the annual Menno Simons Lectures on campus this year. Jacobszoon presented the Reformation Sunday sermon and also lectured on the Dutch Mennonites; Dr. Friedmann's topic was "Anabaptism as Existential Christianity."

John Akar, African playwright, actor and director of Sierra Leone Broadcasting Service, was the Memorial Hall lecturer. His topic was "Which Way Africa?"

John Akar, the Danforth lecturer from Sierra Leone, stands outside Mem Hall. His lecture was the second number in the music-lecture series.



Dr. Robert Friedmann, one of the two Menno Simons lecturers, engages in a discussion with John Waltner.

Dr. Krahn talks to Menno Simons speaker, J. P. Jacobszoon, a pastor of the Harlem Mennonite Church, The Netherlands.





The Orchestra da Camera Academia Musicale Napoletana, an Italian chamber orchestra, performs on the Mem Hall stage.

Founders Day visitors look over some of Gustav Dunkelberger's memoirs in the new music library.

String group, Dunkelberger library for music lovers

Another Memorial Hall music-lecture program featured a small orchestra with a big name. The Orchestra da Camera Academia Musicale Napoletana, an 11-piece ensemble conducted by Piero Guarino, received a standing ovation from a large audience. Featured on the program were selections by Rolla, Pergolesi, Mozart, Mortari, Bucchi and Boccherini.

Founders Day featured the dedication of the Gustav Dunkelberger Memorial Music Library. The library was given to the college by the brothers and sisters of Gustav Dunkelberger and contains records, music pieces and books. Also with the collection came a nine-foot Steinway grand piano.





Robert Docking speaks to Dean of Students, Esko Loewen, prior to chapel period. Docking, a Democrat, won the race for governor a few weeks later.



Representative Garner E. Shriver, Republican, visits with Carl Suderman of Newton before presenting his chapel speech. Shriver was re-elected in the November election.

Convocations offer variety of speakers, music

"An experience with Frank Becker" during convocation in Krehbiel Auditorium.





Bethel's own Shakespeare oak tree.



While students attend chapel period, briefcases galore can be see all over campus.

A view of Central Park from the steps of the Administration Building.





Before walking to the North Newton post office, participants gather on the steps of Memorial Hall for a brief period of meditation.

Placing letters in the mailbox both to protest and to offer an alternative policy are John Swomley and Dwight Platt, advisor of Peace Club.



Repentance Walk and Mail shows Vietnam War concern

About 90 persons walked from Memorial Hall to the North Newton post office on Veterans Day to mail several hundred letters to President Johnson and members of Congress advocating an alternate U.S. policy in Vietnam.

The walk was part of a day-long peace rally sponsored by the Peace Club. Dr. John M. Swomley, professor of social ethics at St. Paul School of Theology, Kansas City, Mo., gave two speeches during the day calling for peace in Vietnam.

Some weeks before the peace walk, Dr. Atlee Beechy who served as director of Christian Service in Vietnam gave students a picture of how the war is going there. He stated that the problems there are economic, political and social.

Studying hard for fall quarter finals amid stacks of books is Rachel Senner.



Carrying heavy boxes on Work Day are Phil Dick and Mike Saunders. Student earnings went toward fulfilling a \$2,535 pledge to the Fine Arts Center, and for getting speakers and entertainment on campus.

Ted Dreier, admissions counselor, talks to one of the guidance counselors from Hutchinson about Bethel at the semi-annual guidance counselor day.





The Newton Civic Chorus, which includes the Bethel oratorio chorus, sings Faure's "Requiem" to a large audience in Newton High School's Lindley Hall.

Accompanying the chorus is the College-Community Orchestra, directed by Mr. Gary Fletcher, Newton High instructor and conductor of Bethel's opera orchestra.



Civic Chorus, orchestra present Faure's "Requiem"

The Bethel College Choir, the Newton Civic Chorus and the College-Community Orchestra presented a concert of religious music in December. The choirs were directed by Dr. Walter Jost, and the orchestra was directed by Mr. Gary Fletcher.

The program consisted of "Motet No. VI" by Bach, "Christmas Concerto in G Minor" by Corelli, and "Requiem" by Faure. Soloists were Mrs. Edward Melcher, Newton, soprano, and Steve Fiol, India, senior, baritone.



"Children Paint the Nativity" was the name of the December exhibit. It featured children's paintings from all over the world.



Several gaily decorated Christmas trees on campus helped create the Yuletide spirit.



Art exhibit and banquet highlight Christmas month

Levi and Wiens really rate at the Christmas banquet.

Punch is being served at the mixer in Memorial Hall before the big banquet downstairs.



"Twelfth Night" comedy includes love, chaos

Shakespeare's "Twelfth Night" was a complete success with audiences in January. The cast of 21 students proved that the play is "very unified and well-rounded containing extremely interesting characters."

The cast was directed by Prof. Arlo Kasper, who also designed the set. No curtains were used, and lighting changes and projections on the back wall added to the scene transitions.



Sir Andrew played by Sam Nance; the jester Feste, Craig Challenger; Sir Toby Belch, Steve Fiol.

The lost brother Sebastian (at right) played by Leslie Leupp and his friend Antonio portrayed by Arlen Epp.



Emily Regier as Maria, Olivia's scheming servant, and the jester Feste disguised to fool Malvolio.





Feste jests with his lady Olivia. Malvolio stands behind Olivia and is played by Jim Stucky.



Clare Ann Ruth as Viola and Sharon Unrau as Olivia.

Viola disguised as a boy visits the court of Orsino, who is portrayed by Gordon Ratzlaff.





President Voth receives the Bethel College seal from Rev. Arnold Nickel at the inauguration in Memorial Hall.

Dr. Orville Voth becomes Bethel's eighth president

Dr. Orville Voth was inaugurated as Bethel's eighth president on February 5 before a crowd of about 2,500.

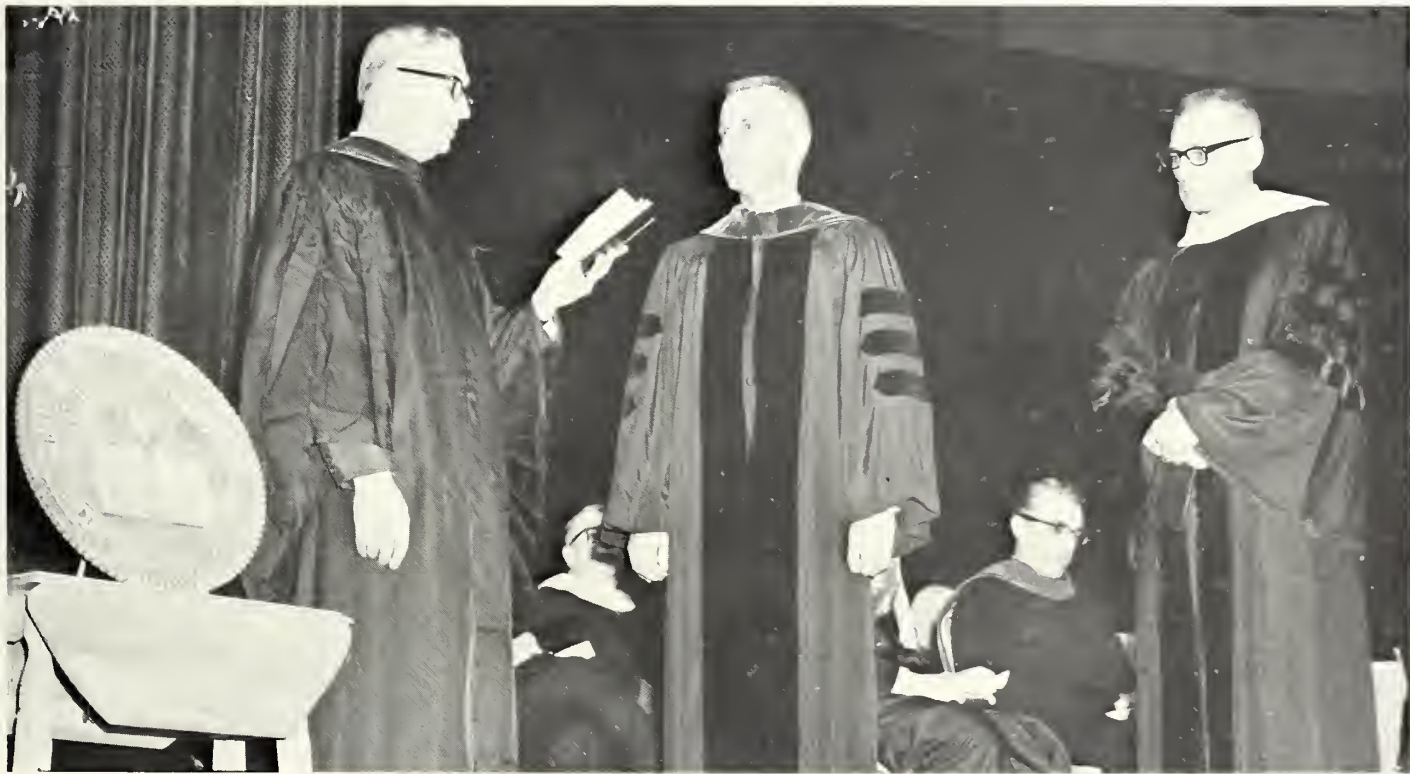
Dr. Gordon Kaufman, professor of theology at Harvard Divinity School, Cambridge, Mass., spoke on "A Vision for a Mennonite College." He claimed that the Mennonite church may be dying out and that the brotherhood "must find her uniquely Mennonite role in specifically modern, urban, complex cultural life." He added that "adaptation to the modern world is the only way in which the Mennonite church can survive as a distinct Christian communion."

In the evening a panel expanded on the theme of the afternoon's keynote address in Krehbiel Auditorium.



Inauguration speaker Dr. Gordon Kaufman speaks to newly-inaugurated President Voth.

Reading the investiture to Dr. Voth is Rev. Arnold Nickel, member of the Board of Directors. At the far right is Dr. John O. Schrag, president of the Board.





Filing into Mem Hall for the inauguration are representatives from over 70 schools and universities, alumni, faculty and political leaders.

Expanding on the afternoon's keynote address is a panel consisting of Dr. Schroeder, Canadian Mennonite Bible College; Dr. Melhorn, McPherson College; Dr. Voth; Dr. Kaufman; Dr. Kreider, Bluffton College.



Construction of new dorm to be completed in fall

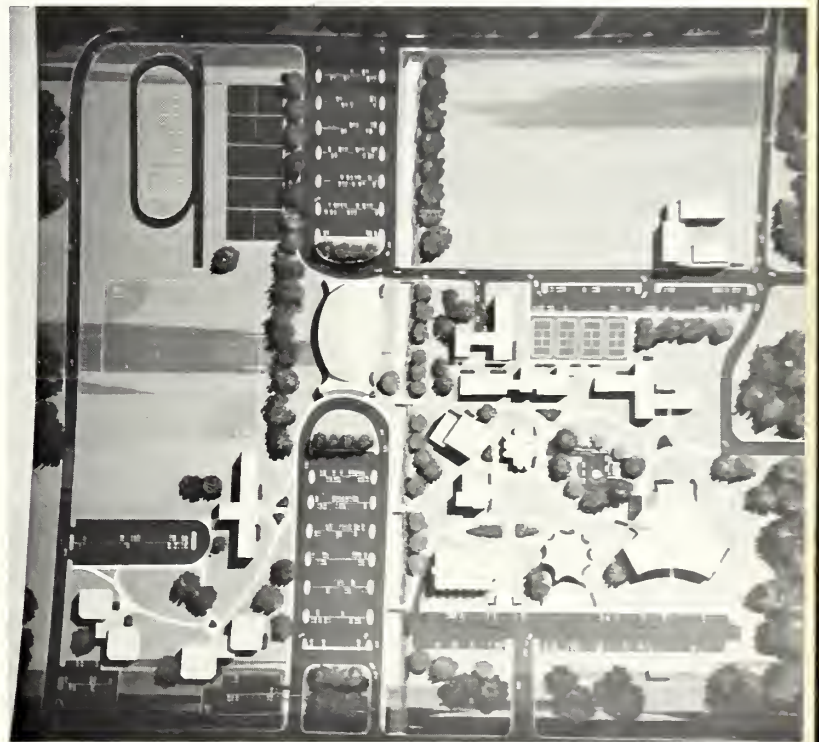
Construction of a new, \$650,000 coeducational dorm started in March. The dorm is being built on the module idea in which nine students will live together. The complex will be completely air-conditioned and carpeted.

Because of steady progress on this dorm, it will be ready for occupancy in the fall.



Jerry Hershberger, student representative, breaks ground for the new dorm while Merle Bender, director of development, looks on.

Every day workmen continued the steady progress on the coeducational dorm.



A picture of the master plan shows a large fieldhouse, student union and library.

Tenebrae Service, Bible Week in Bethel Church

Dr. Jack Finegan, professor of New Testament history and archaeology at the Pacific School of Religion, Berkeley, Calif., presented the annual Bible Week lectures Jan. 31-Feb. 2. Archaeology and the Bible were the topics of Dr. Finegan's presentations.

A series of Holy Week services replaced the annual Christian Life Week. A tenebrae service and passion program were the highlights of the week. The tenebrae is a service of Lenten music and readings during which candles are progressively extinguished until the church is in total darkness.



Dr. Jack Finegan, the Bible Week lecturer, speaks to President Orville Voht.

The Chapel Choir marches toward the choir loft in candlelight at the tenebrae service.





Debate and Forensics Squad — TOP ROW: William Juhnke, Ada Mae Haury, coaches, Pamela Wiens,

Richard Walker, Edward Dick. BOTTOM ROW: Donna Unruh, James Klassen, Emily Regier, Terry Unruh.

Debate and Forensics Squad wins over 70 contests

Bethel's debate and forensics squad had an outstanding record this year. The squad won over 70 contests during the year and defeated such schools as Kansas State, Wichita State, Washburn, University of Nebraska, University of Missouri and Wisconsin State University.

Bethel was the only Kansas college to send orators to the Interstate Oratorical Association

Contest in Detroit, Mich., a feat accomplished by winning the state collegiate oratorical contest. Donna Unruh of Goessel went to Detroit with her oration, "Volunteers for Peace."

The debate topic this year was: "Resolved, that there should be a substantial reduction of U.S. foreign policy commitments."

Terry Unruh and Richard Walker had the best overall record, winning 38 debates and losing 24 for a 61 per cent winning average.

Preparations are being made for the High School Debate Tournament. A High School Forensics Tournament





Visitors to the Fine Arts-Folk Festival look over one of the many displays in Memorial Hall. This particular display features ceramics pieces, and sales profits go toward missions.

The antique steam engines cause a great deal of interest among the male students.

Fine Arts-Folk Festival features German Foods

A large number of visitors attended the Fine Arts-Folk Festival again this year. The Festival was held in April and featured Kaffee-Klatsches with traditional German foods, demonstrations, craft exhibits, outdoor events, stage programs and art films. The theme of the art exhibit and films was "Peace and War."

The Festival originated 15 years ago. This was the first year that a combined program of the fine arts department and folklore themes was given.





Mrs. Herbert Schmidt presents a Low German skit to a large audience in the Fine Arts Center.

German students and members of German Club sing popular German folksongs to entertain the guests in Memorial Hall.





One of the Greek military leaders is ready to take away Troy's last male child.

The lamenting women of Troy are ready to be sold as slaves.



"The Trojan Women" fits Festival's anti-war theme

"The Trojan Women," an anti-war play by Euripides and translated by Lattimore, was presented during the week of the Fine Arts-Folk Festival.

The play takes place at the ancient city of Troy after the end of the ten-year Trojan War. The men have been killed and the captive women are waiting to be shipped off.

A chorus of six women was on stage continuously, talking about what had happened and how they felt. The play was directed by Arlo Kasper.



Betty Jean Graber shows a sorrowful expression as the leading Trojan woman.



Getting ready to call Harrison Salisbury is Dean of Students Esko Loewen (phone on far left). For all the telelectures students made excellent responses.

Telelecture system started; geneticist visits campus

Important voices from across the nation could be heard by way of a telephone public address system this year. Some of the speakers through this system were: Harrison Salisbury, Alf Landon, Norman Thomas, Richard Wilbur, and James Lawson.

Dr. H. Warner Kloepfer, Danforth visiting lecturer, spoke at the third music-lecture program. "Radiation and Human Genetics" was the title of his lecture. A specialist in human genetics, Dr. Kloepfer has conducted several research projects on the transmission of genes.



Dr. H. Warner Kloepfer from New Orleans lectured on the role of human genetics.



Wuppertal Committee—Karen Goering, Laurel Preheim, Charyl Dotson, Karla Krahn, Ulrike Belzer, Walter Epp, Jan Dick. Not pictured: Gordon Ratzlaff, Mark Janzen.

Bethel-Wuppertal Exchange is in its sixteenth year

The Bethel-Wuppertal exchange program was started 16 years ago to create a better understanding between the people of the U.S. and Germany. Bethel's representative in Germany this year was Ruth Nickel; Wuppertal's representative was Ulrike Belzer. Next year's exchangees will be Walter Epp from Bethel and Carl-Heinz Wilhelms from Wuppertal.

Enjoying a meal in the dining hall is this year's Wuppertal exchangee Ulrike Belzer.



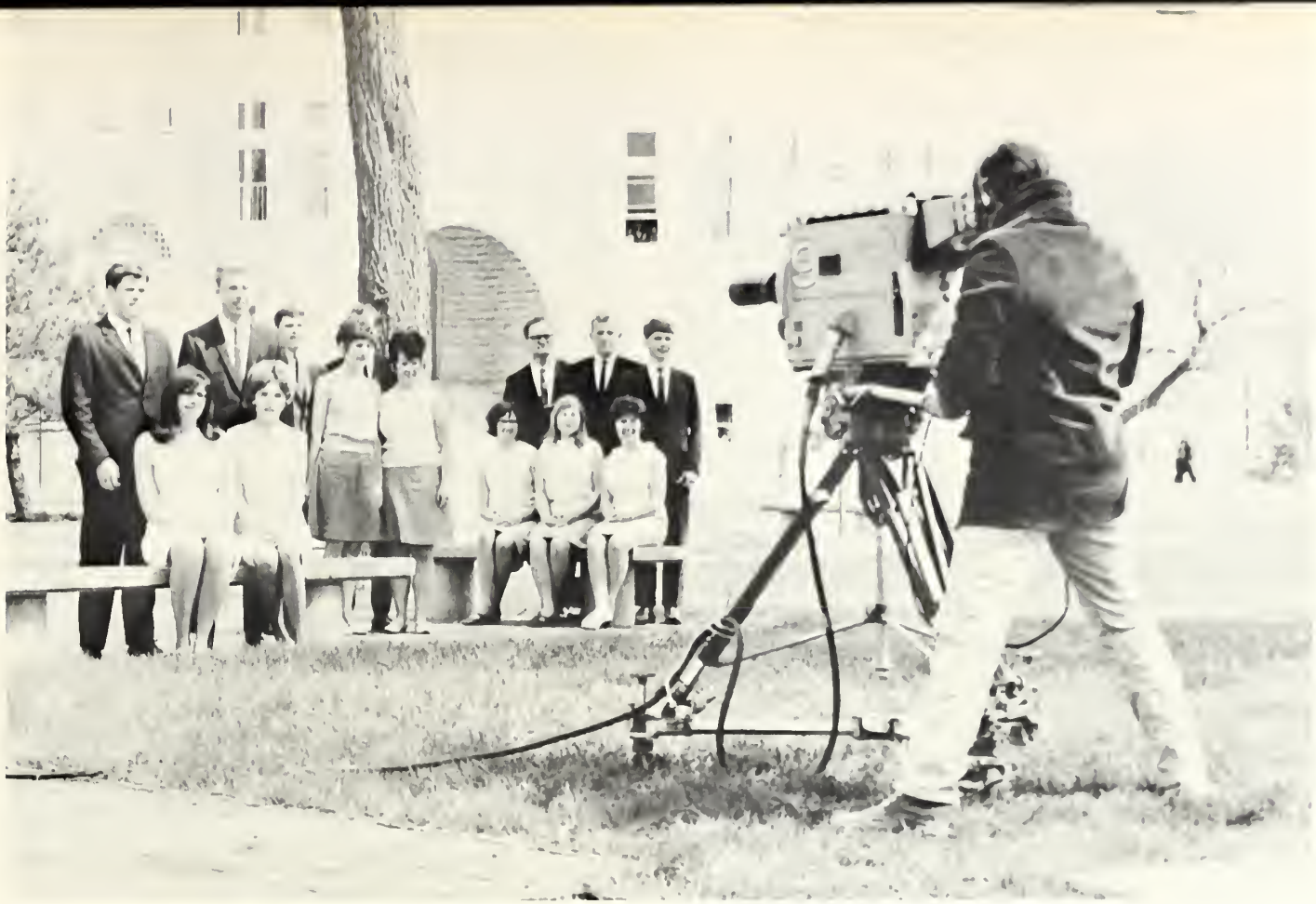
Bethel's exchange student at Wuppertal for 1966-67 was Ruth Nickel. Wuppertal's representative to Bethel for 1967-68 will be Carl-Heinz Wilhelms.

Items at the Wuppertal Auction ranged from Old Crow bottles to Sunday night dinners.



Walter Epp, next year's exchangee to Wuppertal, rides a tandem bike with Wuppertal committee member Karla Krahn. The bike was used to raise money.





The Madrigals are being filmed for the Bell Telephone Company's television program.

Madrigals appear on TV; art works sold in FAC

And all of a sudden a coffee house appears on campus.

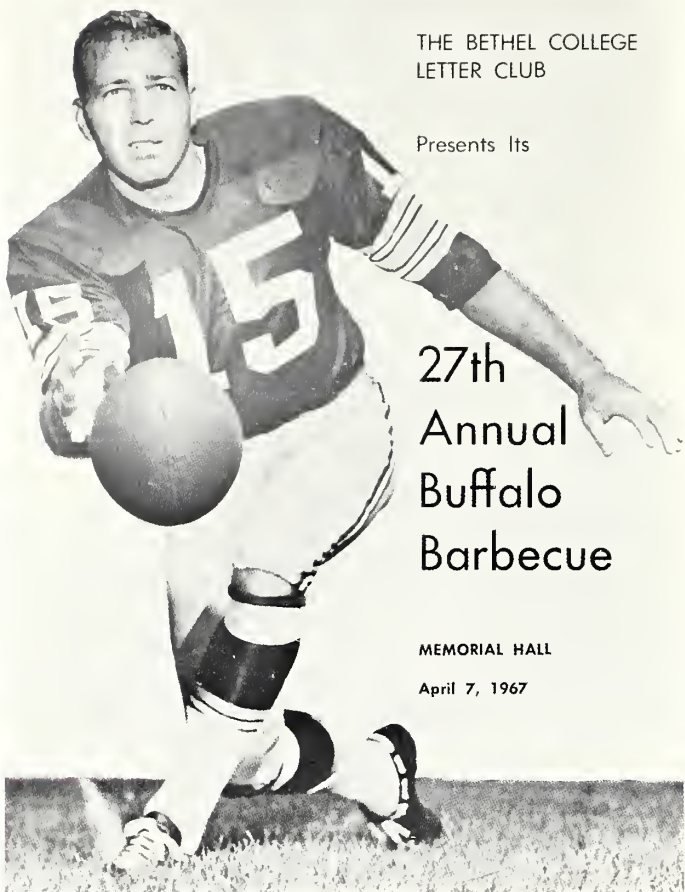


The Madrigal Singers appeared on a state network program, "Campus Talent '67," sponsored by the Bell Telephone Company early in May. Also on the program were shots of the Bethel campus.

London Graphica Arts created quite an interest among art lovers. Also in spring, the desire for a coffee house was evidenced.

A representative of London Graphica Arts looks at a print with a prospective buyer.





THE BETHEL COLLEGE
LETTER CLUB

Presents Its

27th Annual Buffalo Barbecue

MEMORIAL HALL

April 7, 1967

Bart Starr, quarterback for the Green Bay Packers football team.

Quarterback Bart Starr is Buffalo Barbecue guest

The Letter Club held its 27th Annual Buffalo Barbecue this year with Bart Starr, quarterback for the Green Bay Packers, as special guest speaker.

After a dinner of barbecued buffalo and trimmings, a crowd of nearly 1,000 gathered in Memorial Hall to hear Starr explain the key to the phenomenal record of the champion Green Bay Packers. Starr emphasized the five qualities found in winning teams and individuals—preparation, practice, desire, prayer, and a sense of humor.

A Letter Club member serves guests a hearty serving of buffalo meat.



A crowd of nearly 1,000 gathers in Memorial Hall to hear Bart Starr speak.



Pianist Dick gives concert; student art work exhibited

The final concert in the Mem Hall music-lecture series was given by Pianist James Dick, who tied for fifth place in the Tschaiowsky International Piano Competition in Moscow last year. Dick received a standing ovation from the Bethel College audience after a sensitive performance of works by Beethoven, Schubert, Rachmaninoff, Debussy, Chopin and Ginastra.

The annual Student Art Exhibit was shown in the art gallery in May. Outstanding and representative work from all levels of performance were on display.



Pianist James Dick, winner of honors in highest piano competition in the world.

Art students hang a painting in preparation for the annual Student Art Exhibit.



End of school year brings variety of experiences

Nazi leader George Lincoln Rockwell addressed over 600 curiosity seekers in Krehbiel Auditorium one afternoon during spring quarter. Here the infamous leader of American National Socialism condemned leading national policy makers. The general reaction of the audience was one of concerned disbelief.

Students found relaxation and release from tension at the Inn and at the one-act drama and operas.



George Lincoln Rockwell, American Nazi leader, presents a fiery speech.

The "Inn" crowd finds a few moments of relaxation with friends and food.





Studying for finals can get a person down.

Several one-act dramas and operas, directed by students themselves, were presented in Krehbiel Auditorium.

Scenes below are from Bernstein's opera, "Trouble in Tahiti."





Kingston Trio members John Stewart, Nick Reynolds and Bob Shane delighted students at their concert in May. The group introduced a phase in vocal pop music that

has "revolutionized the singing habits of our generation."

Kingston Trio delights large crowd in Memorial Hall

The Kingston Trio, making its last tour before disbanding this year, was sponsored by the Student Council during Leap Week. Because of work day funds it was possible to have this popular trio here.

The trio sang and joked for about two hours before an audience of about 1,000. They sang loud, soft, satirical, and rousing songs such as "Tom Dooley," "Where Have All the Flowers Gone?" "It's Hard, Ain't It Hard?"



Students converse by the spouting fountain at the Junior-Senior Banquet.



Servers attired in Mexican outfits receive final instructions to make "lots of atmosphere" at the Mexican banquet.

Junior-Senior Banquet has Mexican atmosphere

The Junior Class hosted the annual Junior-Senior Banquet, which had a Mexican theme. The Student Union was appropriately decorated with bright yellow streamers and plants by a spouting fountain. Students were served Mexican food by sophomores dressed in gaily colored outfits. The seniors were welcomed by the toastmistress and Junior Class President Betty Jean Graber.

Students receive Thresher Awards, Order of Golden A

Seven students were honored with Thresher Awards for outstanding achievement in a specific area. At graduation five seniors were bestowed the honor of the Order of the Golden A. Graduating with distinction were E. Abrahams, C. Friesen and M. Thiessen; with high distinction, E. Friesen, C. Inghram, W. Juhnke, B. Kaufman, C. Koppes, K. Reimer and J. Zerger.

Thresher Awards—TOP ROW: John Fast, Music; Martha Becker, Art; Steve Fiol, Drama; Samuel Lapp, Industrial Arts; Harold Funk, Mennonite Contributions. **BOTTOM ROW:** Pat Mueller, Creative Writing. **Order of the Golden A**—Elroy Friesen, Carol Inghram, Clayton Koppes (also recipient of Thresher Award for Creative Research), Keith Reimer, Joseph Zerger.





Making the traditional walk around the campus is the Class of 1967.

Junior class officers lead the graduates up the Memorial Hall steps.

105 graduates take part in commencement exercises

A total of 105 seniors participated in graduation exercises in May. The week's activities opened with baccalaureate services and a concert by the College Choir. Commencement exercises were held in Memorial Hall the following Sunday afternoon with Dr. Emory Lindquist, president of Wichita State University, presenting the address entitled "The Graduate and the Tradition of Civility."





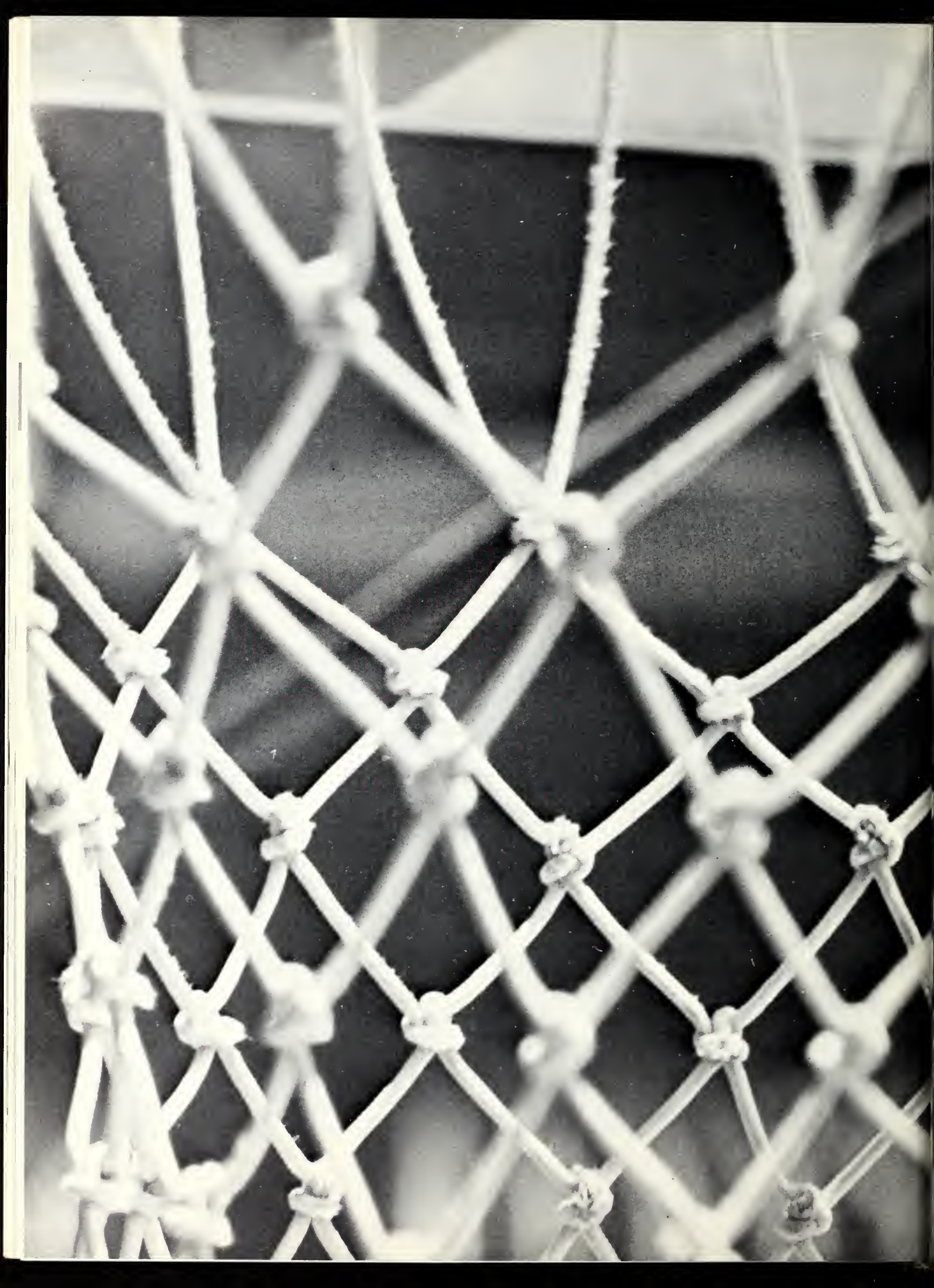
Dr. Emory Lindquist presents the 74th commencement address, "The Graduate and the Tradition of Civility."

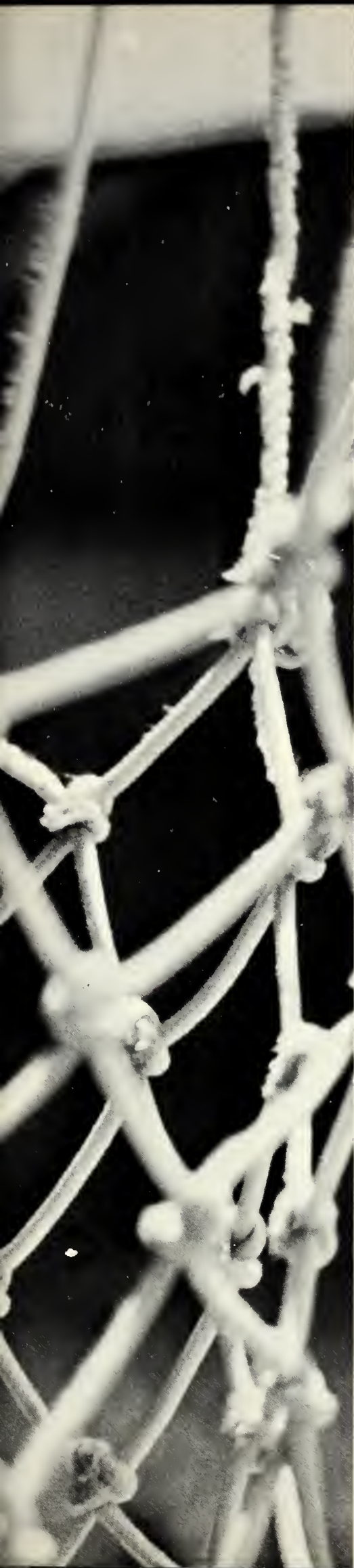


Peter Udofia of Nigeria receives his diploma from Dean Justus Holsinger.

As the graduates face the speakers platform, they anxiously wait for their diplomas.







Weak offense and a young squad affect team showing

A punchless offense and lack of experience helped bring about Bethel's second consecutive winless football season. As a team, the Threshers managed to score only 41 points all season and the defense scored 14 of these. The lack of experience was evidenced on the roster with a total of 27 freshmen and sophomores out of a squad of 38. This young squad never gave up though, and had a good chance for some victories except for a few bad breaks.

Some individual efforts must be recognized. The tri-captains: Wayne Unruh, Stan L. Voth, and Jay Goering, the only seniors on the squad, led the team with their never ending hustle and spirit. These three played both offense and defense a large part of the season.

Jerry Hershberger led the team in pass receiving with 33 receptions for 418 yards, good for fourth place in the KCAC. Hershberger missed making the all-conference team by one vote.

Doug Penner led the team in total offense and passing yardage with 514 and 551 respectively.

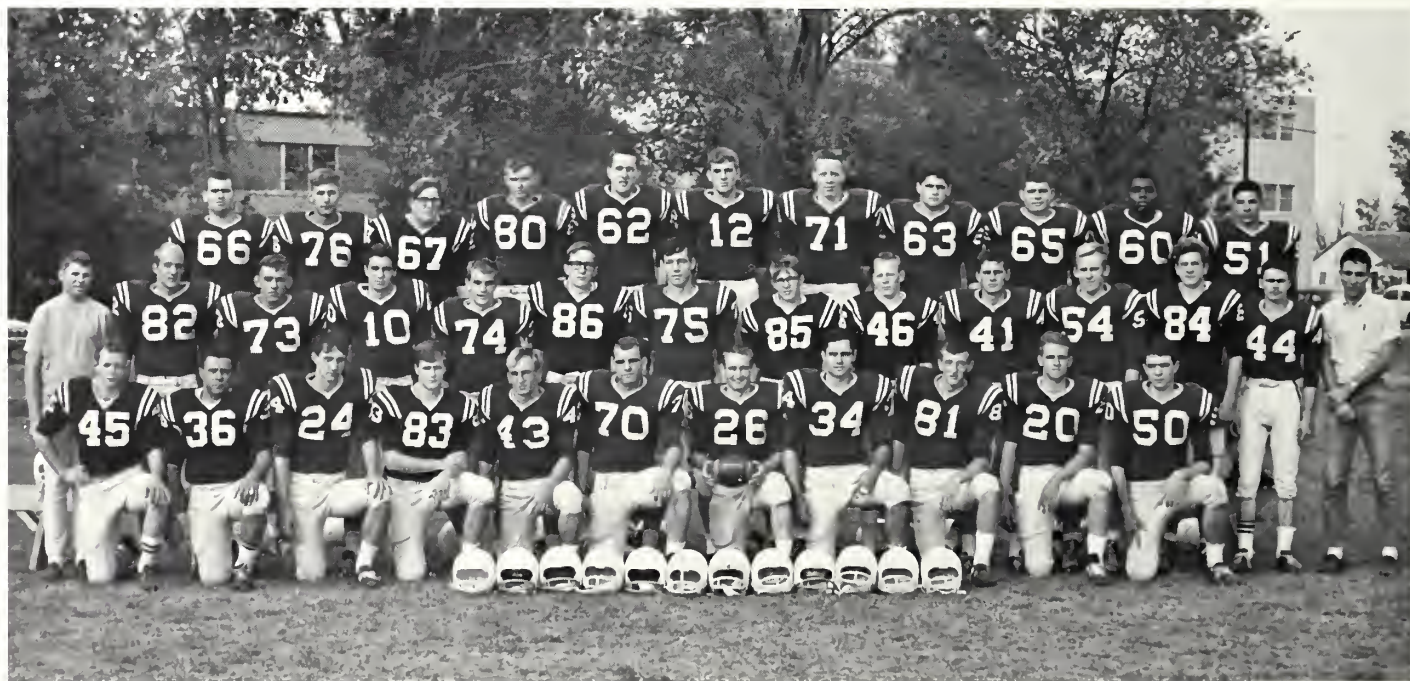
A middle linebacker, Dennis Loepp, was the bulwark of the defensive unit. His name was also mentioned in the all-conference selections.



Don Schmidt (82), Thresher end, and a Sterling defender fight for a pass which fell incomplete.

1966 Football Squad—TOP ROW: Dave Stroud, Phil Koontz, Charles Lehman, Bob Dester, Marlin Friesen, Doug Penner, Howard Reimer, Rick Siebert, Jim Strausz, Mike Burnett, David Johnson. SECOND ROW: Weston Stucky, manager, Don Schmidt, Gerry Unruh, Allen Friesen, Bob Esau, Dennis Dueck, Delbert Gaede, John

Gaeddert, Frank Wiebe, Dennis Loepp, Dave Jantzen, Steve Unruh, Joe Buckland, Steve W. Goering, manager. BOTTOM ROW: Peter Bergen, Earl White, Terry Love, Dennis Regier, Ralph Bartel, Wayne Unruh, Jay Goering, Stan L. Voth, Jerry Hershberger, Jim Huxman, Frank Wedel.





Doug Penner (12) dives unsuccessfully for a pass in the Homecoming tilt against Southwestern.

Freshman halfback, Frank Wedel (50), is about to be pulled down from behind by a Sterling defender. Jay

Goering (26) and Wayne Unruh (70) move in to provide the interference.



Threshers play best game of year against Friends

The Threshers opened the season against the Baker Wildcats, losing 16-0, in a steady downpour of rain. This was one of the team's better efforts as they outplayed the Wildcats statistically. The defense played exceptionally well and all 16 of Baker's points were scored off the Thresher's offense.

The next week Bethel traveled to Ottawa to face the perennially tough Braves. After the Threshers had a good series of three or four first downs, the Braves took over and scored almost at will throughout the game. Ottawa led at halftime, 33-0, and scored four more TDs the second half to bring the final score to 60-0.

After this sound beating the Threshers bounced back to play their best game of the year against Friends, only to lose on two blocked punts which the Falcons recovered for touchdowns. Bethel led at half 13-7, but the second half was a complete reversal with Friends capitalizing on some costly penalties and the blocked punts to score three touchdowns while holding the Threshers scoreless, making the score 27-13.

This game seemed to take something out of Bethel as they were run over by previously winless Sterling 39-2. Fumbles and intercepted passes paved the way for the Thresher's loss. Bethel had more total offense than did the Warriors, but couldn't compensate for the mistakes.

College of Emporia was the Thresher's next foe and they continued Bethel's woes as they romped 50-7. The Presbies' offense was at its best as they scored seven touchdowns.

Paul Harms, Assistant Coach; Eugene Reusser, Head Coach; Irvin Isaak, Assistant Coach.



Howard Reimer (71) is surrounded by Sterling defenders as he leaps for a pass against the Warriors.

Coach Reusser discusses a play with one of his squad on the sidelines.





Doug Penner, Thresher quarterback, is afforded good protection as he attempts an aerial against Sterling.

KCAC final standings

College of Emporia	8-1-0
Ottawa	8-1-0
Southwestern	7-2-0
Baker	5-3-1
Friends	5-3-1
Bethany	4-5-0
McPherson	3-6-0
Kansas Wesleyan	2-7-0
Sterling	2-7-0
<i>Bethel</i>	0-9-0

1967 football results

Bethel	0	Baker	16
Bethel	0	Ottawa	60
Bethel	13	Friends	27
Bethel	2	Sterling	39
Bethel	7	College of Emporia	50
Bethel	0	Kansas Wesleyan	46
Bethel	7	Southwestern	46
Bethel	12	McPherson	31
Bethel	0	Bethany	49

Seniors on the squad and tri-captains for the year were Jay Goering (36), Stan Voth (34), and Wayne Unruh (70).



Hopes for Homecoming dashed with Southwestern

Bethel's next encounter was with the Kansas Wesleyan Coyotes. Both teams were winless and in the KCAC cellar. The Threshers had high hopes for a victory, only to play their worst game of the year and get thrashed 46-0. The Coyote's offense was astounding as they rolled up 553 yards.

Hopes for a Homecoming victory were dashed when the Southwestern Moundbuilders sent the Threshers reeling to their seventh consecutive defeat 46-7. Bethel's offense managed only 47 net yards all afternoon and the touchdown was scored on a recovered fumble by Thresher defensive tackle Howard Reimer.

Bethel rebounded to give McPherson a scare in the first half before fading and losing 31-12. The Thresher's longest play from scrimmage of the year resulted in a 59-yard touchdown pass from Doug Penner to Jay Goering.

Bethel's final game of the season was symbolic of their play throughout, as they were bombed by the Swedes from Bethany 49-0. The Swedes' offensive unit rolled up a total of 529 yards while Bethel racked up their second highest total offense output of the year with 241 yards.



Jay Goering looks for running room after gathering in a pass against Sterling.

Team managers Steven W. Goering, Weston Stucky and Alan Fleming repair some of the football equipment.





Basketball

Threshers tie for third in the Kansas Conference

A young, but hustling, Bethel basketball squad grabbed a share of third place in the Kansas Conference with a 10-8 record. Overall, the Threshers compiled 12 wins against 9 losses. Playing in Lindley Hall, Bethel won seven out of nine games, but on the road they were only mediocre, winning five and losing seven.

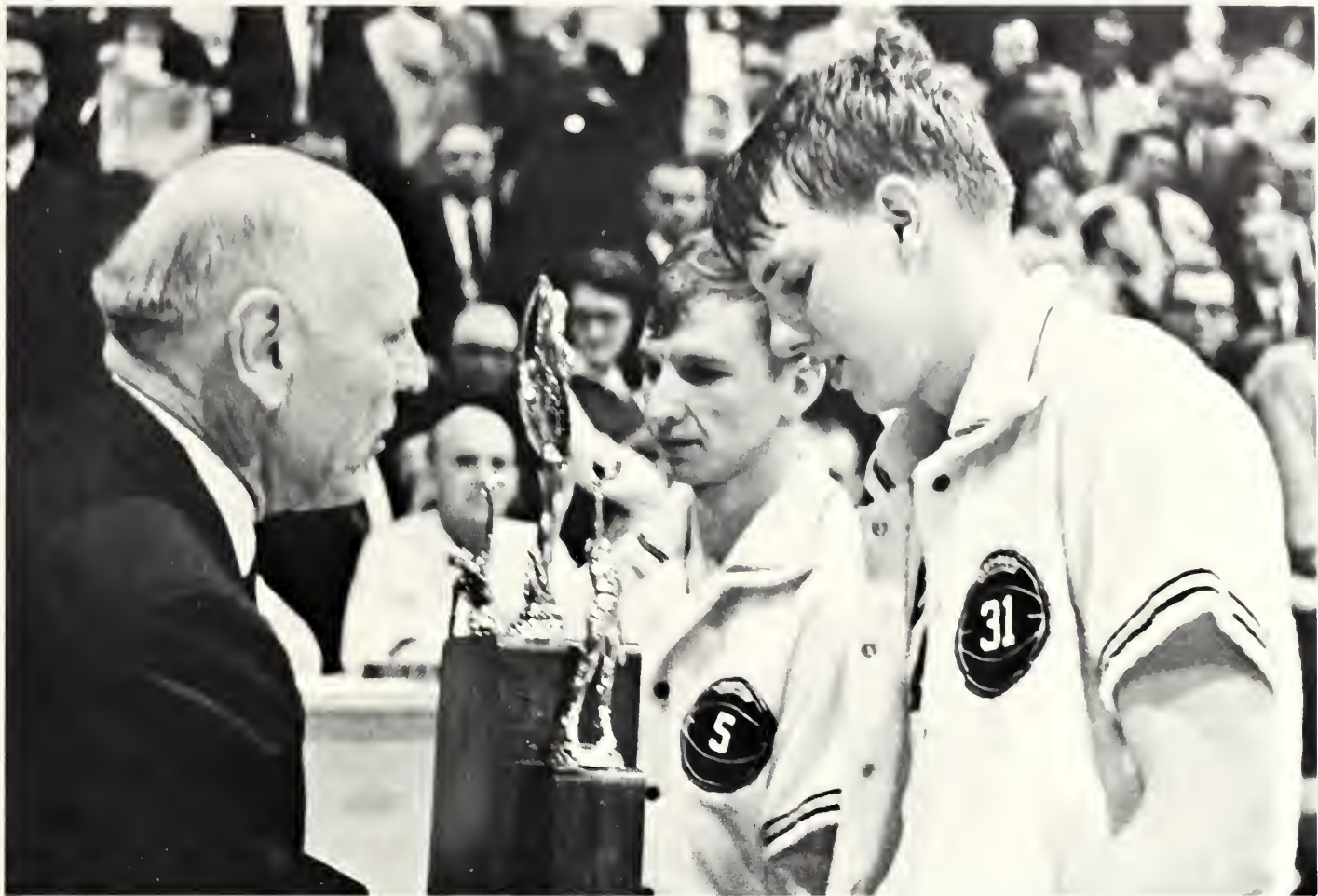
Several members of the squad made very respectable showings through the year. Bruce Ediger was selected by the coaches for the All-Conference team. He led the Threshers in scoring with an 18.7 average, which was also good enough for third in the conference. Chet Roberts won the conference free throw championship, hitting 65 of 72 attempts for a 90.3 percentage. He was consistently among the national leaders throughout the season.



Head coach, Paul Harms, and assistant coach, Irvin Isaak.

Varsity A-Team — TOP ROW: Don Schmidt, George Waddles, Doug Penner, Loren Huse, Stan Voth, Bruce Ediger. BOTTOM ROW: David Janzen, Chuck Friesen, Steve Schmidt, Chet Roberts, Stuart Friesen, Paul Schrag.



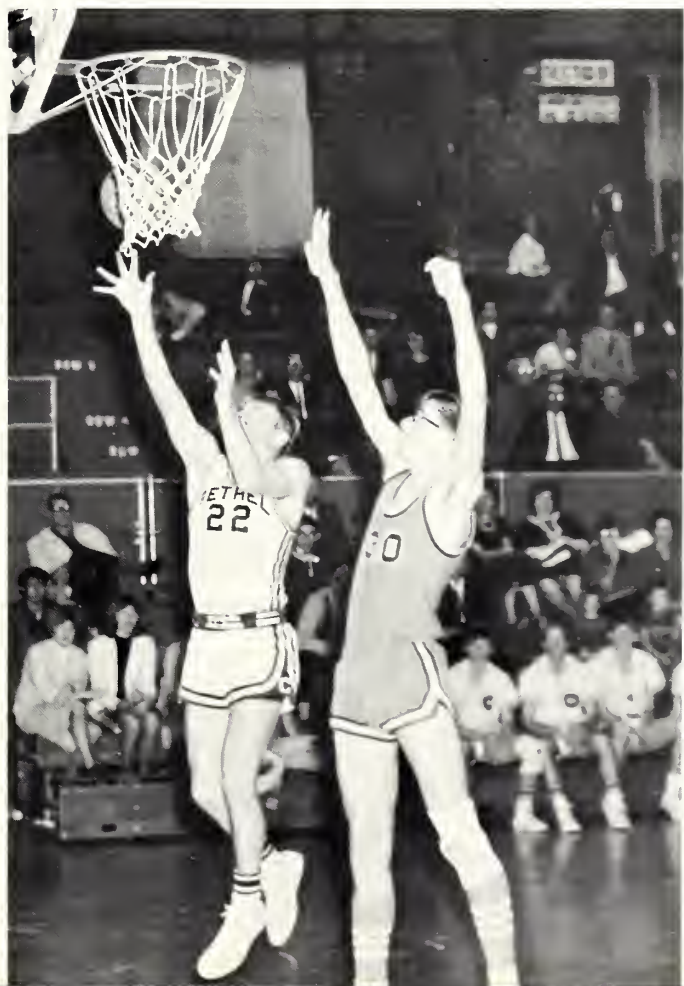


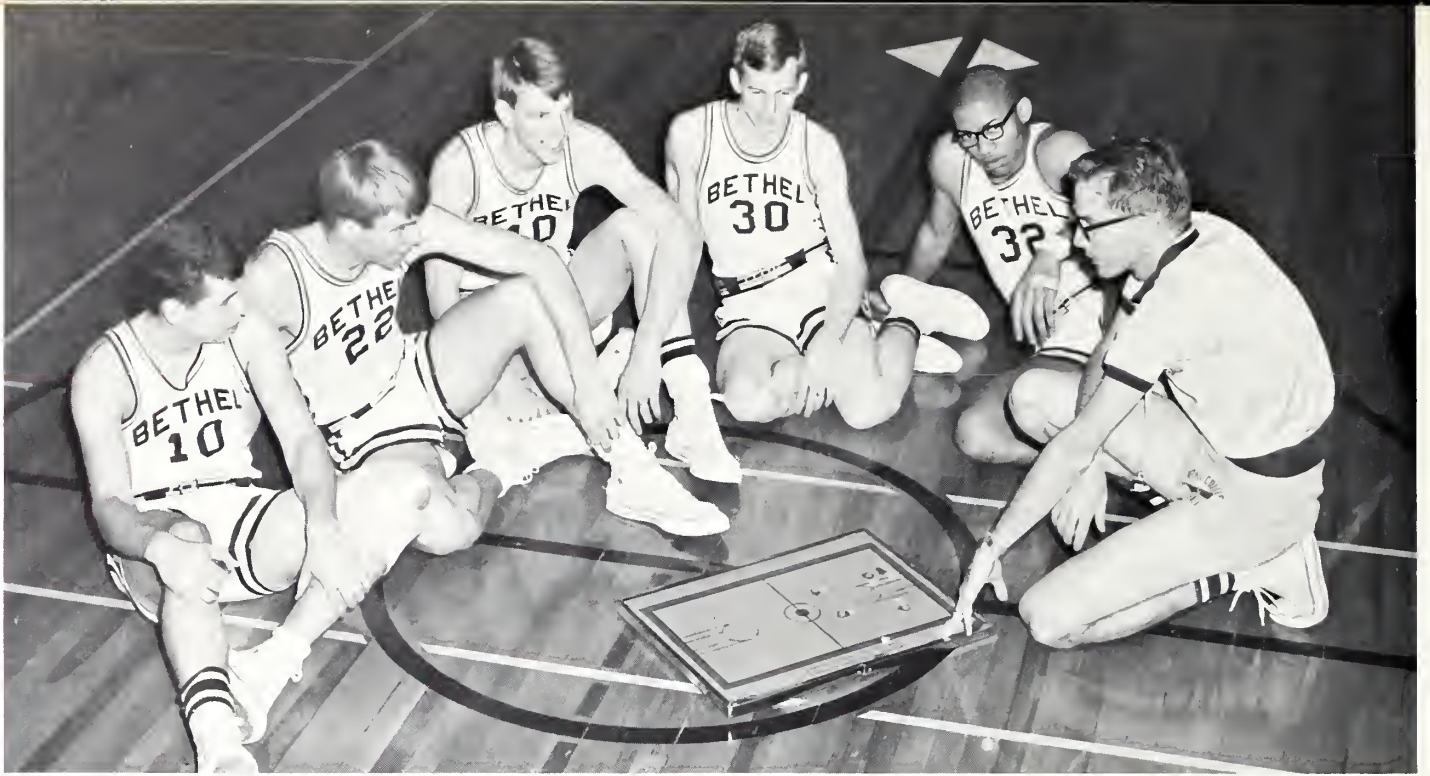
Captains Steve Schmidt and Stan Voth receive the challengers trophy at the Central Kansas Tournament at Moundridge from Ray Hahn, athletic director at Bethany College.

Bruce Ediger was chosen All-KCAC forward with an 18.7 average.

1967 basketball scores

Bethel	63	Bethany	58
Bethel	64	Tabor	60
Bethel	69	Kansas Wesleyan	65
Bethel	78	Southwestern	97
Bethel	70	McPherson	68
Bethel	57	Sterling	83
Bethel	64	Ottawa	72
Bethel	69	Emporia	73
Bethel	96	Bethany	53
Bethel	75	Friends	59
Bethel	55	Kansas Wesleyan	69
Bethel	71	Baker	63
Bethel	63	Tabor	77
Bethel	83	Southwestern	76
Bethel	54	McPherson	65
Bethel	94	Sterling	63
Bethel	72	Ottawa	85
Bethel	68	Emporia	88
Bethel	83	Bethany	73
Bethel	100	Friends	66
Bethel	76	Baker	74





Coach Harms goes over game strategy with the Thresher starters Chet Roberts, Bruce Ediger, Stan Voth, Steve Schmidt and George Waddles.

Threshers capture first at Moundridge Tournament

Bethel opened its season in great fashion by capturing the Central Kansas Tournament at Moundridge. The Threshers whipped the Bethany Swedes the first night, 63-58, thus earning the right to play Tabor for the title. A great second half comeback was too much for the Blue Jays as the Threshers rallied to win, 64-60.

Kansas Wesleyan was Bethel's first conference opponent and the Coyotes fell victim to an inspired Thresher effort and were defeated, 69-65. This was one of only three losses the Coyotes suffered all year on their way to the conference championship.

1967 B-Team—TOP ROW: Lyle Stucky, Doug Penner, Loren Huse, Ray Loewer, Pete Goering, Paul Schrag.

Southwestern then snapped Bethel's victory strings at three as they ran over the Threshers, 97-78.

Getting back on the winning track, the Threshers nipped the Bulldogs from McPherson, 70-68, in an overtime thriller. Ediger paced the squad with 27 points.

In one of Bethel's poorer showings, they were swamped by the Sterling Warriors, 83-57, just before the Christmas vacation.

Returning from vacation, the Threshers lost heart-breakers to Ottawa and College of Emporia 72-64 and 73-69. Ediger had 24 against Ottawa and Seve Schmidt hit 23 against the Presbies.

BOTTOM ROW: Dennis Unruh, Stuart Friesen, David Janzen, Don Schmidt, Ron Stucky.





Doug Penner pulls down a rebound against Bethany at Moundridge Tournament.

Driving in for a laying against Friends, Don Schmidt scores two for Bethel.



Friends' Quakers walloped 100-66 in final home game

Bethel played perhaps its finest game as it out-classed Bethany 96-53. All 12 varsity players scored in this game. A four conference win was earned with a second half rally, as the Threshers wrecked Friends, 75-59.

Kansas Wesleyan gained revenge for its earlier defeat as they beat the Threshers, 69-55 at Salina.

Bethel returned home to gain another victory. Baker was the victim this time as the Threshers led throughout the contest, winning 71-63.

In the next six games the Threshers gained two wins and four losses.

For the third time in three tries, Bethel defeated Bethany. The victory evened the Threshers' record at 8-8 for conference play.

Playing their final game of the season in Lindley Hall, and their final home game under Coach Harms, the Threshers rose to the occasion and walloped the Quakers from Friends, 100-66. Six men scored in double figures, with Bruce Ediger leading with 29.

In a battle for third place, Bethel came from behind to defeat Baker in a double overtime, 76-74. This victory ended the season for the Threshers and tied them for third with Baker.

The focus on the bench indicates the anxiety of the team at the Central Kansas Tournament.





1967 Track Squad—TOP ROW: Coach Virgil Penner, Howard Reimer, Wade Brubacher, Rick Siebert, Jerry Hershberger, manager, Dave Jantzen. SECOND ROW: Frank Wiebe, Steve Goering, Richard Friesen, Dennis Regier, Wayne Regier. FRONT ROW: Verne Voth, Jay Goering, Roy Griffin, Archie Schmidt. Jay Goering was the only senior on the squad.

Running against Bethel of Minnesota are Verne Voth, Jerry Hershberger, Steve Goering and Richard Friesen.



Track team establishes several school records

An enlarged track squad combined with hours of practice produced four new school records and the 'Threshers' first track victory in several years.

Richard Friesen, sophomore sprinter of Reedley, Calif., was unbeaten by conference runners. His fastest time in the 100-yard dash was 9.8, this being .2 of a second faster than the existing school record.

Other track men establishing school records were Dennis Regier, freshman of British Columbia, in the three-mile run; Steve Goering, junior of McPherson, in the 440 intermediate hurdles; and Allen Jantz, Newton freshman, in the triple jump.

Outstanding season performances were turned in by Wade Brubacher, Newton sophomore and gold medal winner in the conference meet, in the discus; Rick Siebert in the shot-put; Jay Goering, Jerry Hershberger, Verne Voth and Richard Friesen in the mile relay.

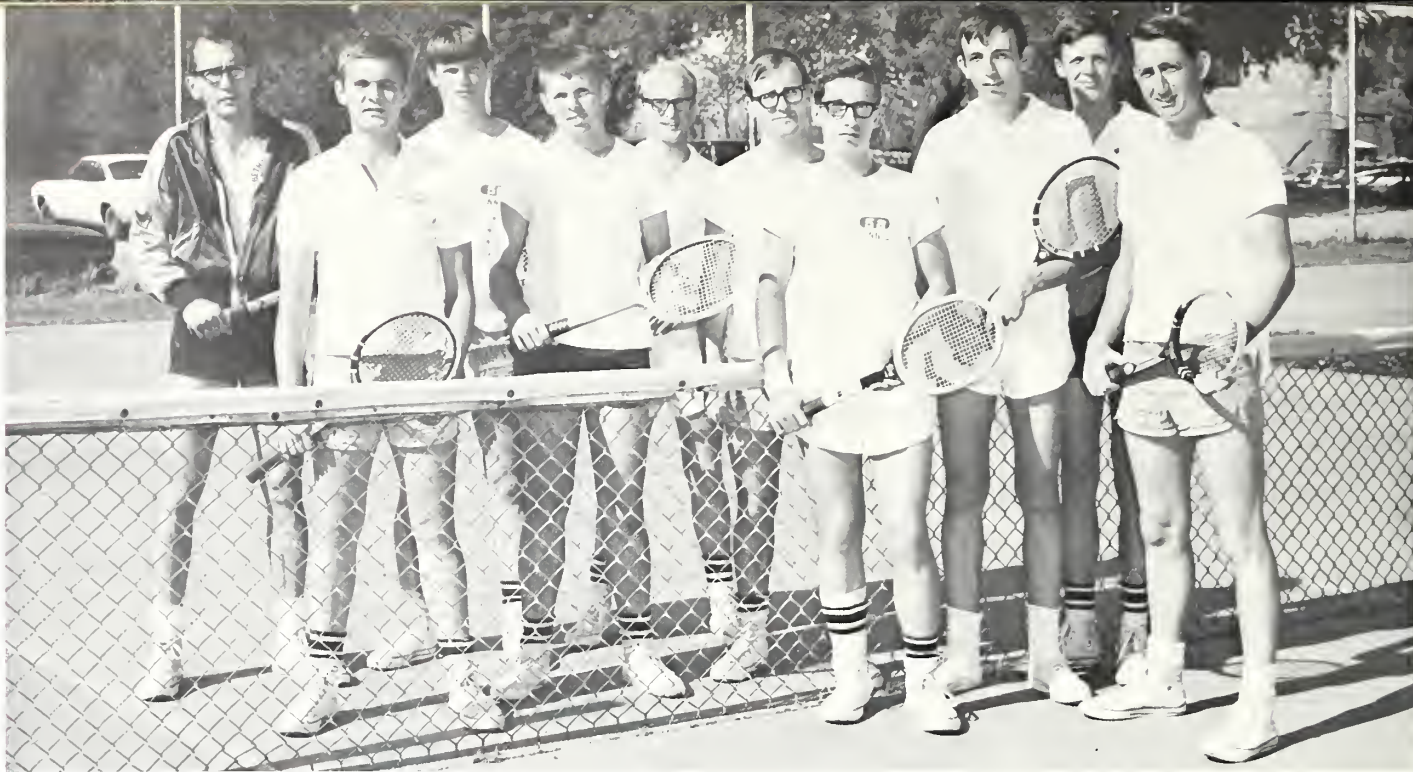
"I have never worked with a group of boys who worked harder than this year's squad," said Coach Virgil Penner, who looks forward to a strong track squad next year.



Verne Voth and Jay Goering run even with Bethel of Minnesota in the relays.

Freshman Rick Siebert heaves the shot-put. Siebert showed improvement throughout the season.





1967 Tennis Team—Coach Paul Harms; Eugene Claassen, first year award; David Janzen, second year award; Weston Stucky, second year award; John Kauffman, first year award; Mark Stucky; Mike Saunders; Jerry Kagele, third year award; Kurt Jantz; Eugene Bergman, third year award.

Netmen take third place at Tabor tennis tourney

Third year letterman, Jerry Kagele, ranked first in singles competition. Kagele is a senior.

Close competition and three set matches highlighted the play of the tennis team. In tournament competition the Bethel team placed third in the eight-team Tabor Tournament and was one of the six teams failing to score in the Conference Tennis Tournament. The best individual performances were in singles.



1967 Tennis

Bethel	6	Hesston	3
Bethel	3	Sterling	6
Bethel	4	McPherson	5
Bethel	3	McPherson	4
Bethel	8	Tabor	1
Bethel	1	Bethany	6
Bethel	3	McPherson	4
Bethel	7	K. W. U.	2
Bethel	8	Tabor	1

Inexperienced golfers show poise, win dual contests

For being inexperienced, the golf team made a good showing this year. Bethel did not field a golf team last year. Ted Koontz and Warren Gering were the only returning lettermen. Lettermen for this year were Ted Koontz, Warren Gering, Steve Unruh, Dennis Dueck and Duane Swartzendruber.

The team won dual contests with Sterling twice, Bethany and Friends once, while losing to McPherson twice and to Friends once. The golfers also lost a triangular to C. of E. and Kansas Wesleyan. The fellows showed real poise in their matches and came from behind several times to win matches. The season was climaxed with the K.C.A.C. tournament at Spring Valley Country Club at Wichita. Bethel finished seventh in a field of eleven finishing ahead of Friends, Bethany, Sterling and Tabor. Steve Unruh was the leading golfer for Bethel there, finishing 17th in a field of 50 golfers.



Senior golfer was Warren Gering. He shared the number two spot with Steve Unruh. Ted Koontz played number one man.



1967 Golf Team—TOP ROW: Warren Gering, Steve Unruh, Dennis Dueck, Ronald Dietzel, Coach Irvin Isaak, BOTTOM ROW: Alan Friesen, Duane Swartzendruber, Ted Koontz.



Thresherette Basketball Team — TOP ROW: Lois Foth, Margaret Unruh, Karen Lee, Debbie Unruh, Jeanie Skindeleski, Karen A. Goering, Shirley Koehn, coach. BOTTOM ROW: Karen F. Goering, Ethel Stucky, Dorothy Nachtigal, Darla Banman, LeAnn Stucky, Susan Schmidt.

Thresherettes complete another winning season

The Bethel Thresherettes once again finished a very successful season going undefeated. Playing under the direction of Shirley Koehn, coach, they completely outclassed all their competition.

Debbie Unruh and Karen Lee paced the Thresherettes' scoring which was nearly doubled that of their opponents.



Above: Lois Foth battles for a tip. Right: Debbie Unruh grabs a rebound in a game played at Memorial Hall.





Dennis Dueck and Mark Stucky go after the ball in the soccer intramurals.

Full basketball schedule, soccer head intramurals

The intramural program at Bethel was restricted mainly to basketball. A full slate of games were scheduled and played by the men during winter quarter. Ten teams participated in the program. This included eight from Goering Hall, one non-dormers team and one team of married men. Second West 'B' captured the intramural champion-

Gene Bergman, Married Men's Team, goes up high to contract the tip against 1st North.



ship by mauling their hall mates, 2nd West 'A', in the finals.

Soccer replaced softball as the spring sport, but no program could be worked out for matches between the halls. Nevertheless, there was plenty of enthusiasm and everyone who played enjoyed themselves.

Rod Hofer and Ron Peters anxiously await a rebound in their intramural game.









1966-67 Student Council—Larry Friesen, Lois Foth, Jerry Kagele, Judith Friesen, Charyl Dotson, Richard Friesen, Jerry Hershberger, David Janzen, Jolene Huxman, Janet Juhnke, advisor, Marianne Krahn, Chuck Friesen, Eulene Friesen, Terry Unruh.

Stuco President Larry Friesen worked with faculty and administration in formulating campus policies.



Student Council seeks to satisfy student needs

In attempting to provide students of Bethel College with the best possible opportunities for a total educational experience, it was the job of the Student Council to seek out and to satisfy the students' needs and desires in all phases of campus life.

In fulfilling this purpose, the Council sought for a communications link with the administration and faculty, as well as promoted lectures and various forms of entertainment.

Larry D. Friesen of American Falls, Idaho ably served as Student Council president this year. Lois Foth kept students well informed with minutes she wrote as Stuco secretary.

Stuco projects further student involvement

Several projects were initiated this year to further student involvement. A teacher and course evaluations program, Student Union Forums to discuss campus concerns, and telelectures with national leaders were just a few.

The climax to a successful year came for Student Council with their sponsorship of the live performance of the Kingston Trio.



Next year's Stuco president, Richard Friesen, looks forward to a successful and innovating year.

A small group lingers in the Student Union after the Student Forum on campus social activities. The forums were sponsored by Stuco and Richard Friesen, a Council member, led the discussions.





En route to the North Newton post office to mail letters of protest over the Vietnam war are about 90 persons.

Peace Club organizes "Repentance Walk and Mail

The Peace Club offered those students with a genuine concern for the promotion of peace a chance to participate in club activities.

This year's projects included the peace walk, panel discussions in church communities to inform the public of the Vietnam situation, and a rice

supper with proceeds going toward relief in Vietnam. Finally at the year's end 13 members journeyed to the U.N. to participate in the Intercollegiate Peace Conference. Members also collected for CROP in the Newton and N. Newton communities.



Peace Club—TOP ROW: Arlen Epp, Steve L. Goering, Dwight Platt, advisor, Fred Dick, Ted Koontz, Kathy Gaeddert, Tom Friesen. SECOND ROW: Karla Krahn, Marianne Krahn, Roberta Senner, LaDeen Goering, Darlene Klassen. BOTTOM ROW: Ann van der Weg, Charles Graber, Esther Jantzen, Allan Teichroew. (All members not pictured.)

Church Workers Fellowship interested in church work

The Church Workers Fellowship existed to provide an opportunity for persons interested in all aspects of the church to become better informed about its tasks. Upper Room Fellowship meetings were held at KSIR.

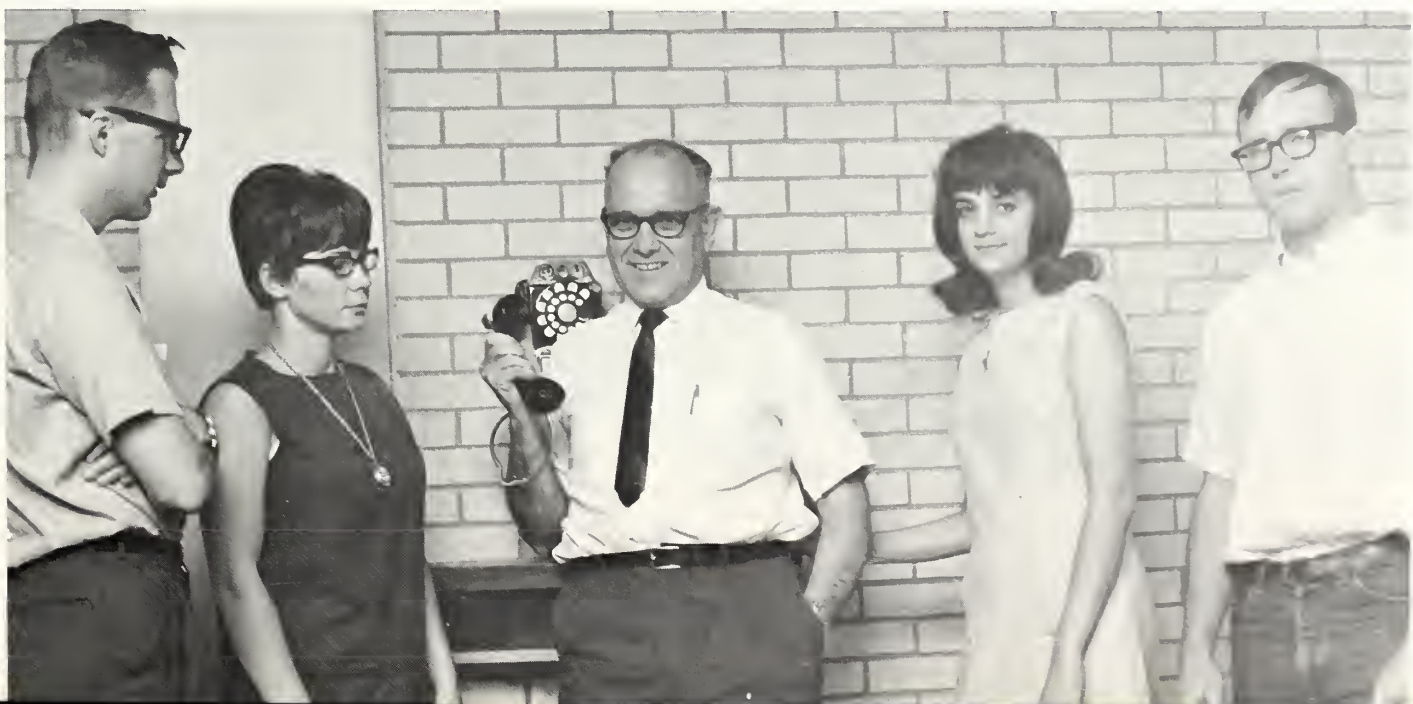
New Telelecture Committee asks leading men to speak

The telelecture system was a new innovation on campus designed to introduce noted figures to students through an amplified telephone system. This year's committee organized telelectures with Bishop Pike, Robert Swanson, and others (see events section).



Church Workers Fellowship—Robert Suderman, advisor, Roger Hofer, Ted Koontz.

Telelecture Committee — Jim Juhnke, Rosemary Nikkel, Esko Loewen, Jan Dick, Mary Stucky. NOT PICTURED: Chet Roberts.





Men's Governing Council—TOP ROW: Doug Huxman, Ardean Goertzen, Dale Schrag, Denny Loepp, Stuart Friesen, Carroll Peterson, Larry Krehbiel, Duane Swartzendruber. BOTTOM ROW: Mr. and Mrs. Irvin Isaak, dorm parents, Don Schmidt, Jay Goering, Stanley L. Voth.

Women's Governing Council—TOP ROW: Lois Foth, Betty J. Graber, Martha Stanley. SECOND ROW: Betty Reimer, Kathy Kasper, dorm director, Chris Stucky, Arlene Nickel, LaVonne Goossen, Lee Ann Unruh. BOTTOM ROW: LaDonna Regier, Elvera Goering, Janet Schroeder, Cheryl Ulrich. NOT PICTURED: Anna Sue Deckert, Linda Eymann, Dorothy Nickel.



Men's Governing Council improves dorm rec-room

Men's Governing Council met every other Monday to discuss dorm problems. The Council's main project this year was starting the rec room beautification project which involved painting, a room partition, new furniture.

Women's Council enforces dorm rules

Women's Governing Council met once a week to work out regulation violations. The Council's purpose is "to insure the protection of equal freedom and right for all women students living in college residence halls."



Home Ec Club—TOP ROW: Dorene Flaming, Donna Unruh, Kay F. Scharping, Gloria Schrag, Linda Koehn, Chris Stucky, Sharon Goossen, Anita Boese, Kay Balzer,

Dorothy Nachtigal, Sharon Penner, Margaret Doerksen, LaVera Voth. BOTTOM ROW: Mrs. Jeffries, advisor, Elaine Ediger, Carilyn Peters, Pat Epp, Ann Zerger.

Home Ec Club sells UNICEF cards

The Home Ec Club planned monthly programs relating to home economics—in the home or in wider areas. The girls sold UNICEF cards, had a party for the girls of Methodist Youthville, and made a trip to the Wichita Bridal Shoppe.

Student Wives—TOP ROW: Alice Funk, Carol Peters, Joyce Schmidt, Marie Zacharias, Edith Graber, Helen Unruh, Karen Thieszen. SECOND ROW: Alice Huxman, Bernice Isaak, Janeal Krehbiel, Vivian Leupp, Diane

Student Wives socialize, discuss goals, interests

The student wives organized themselves into a social club for the purpose of sharing common goals, problems and interests. They met in homes of members or in the hospitality room of the KG&E building.

Gering, Donna Voth. BOTTOM ROW: Susan Seery, Willene Bergman, Nola Stucky. NOT PICTURED: Mrs. Cornelius Krahn, advisor.





Thresher Staff—Dori Saltzman, Ann van der Weg, Martha Becker, Charyl Dotson, Paul Schrag, Terry Unruh, Pete Goering. NOT PICTURED: Sharon Penner.

Larger pages add new look to Thresher yearbook

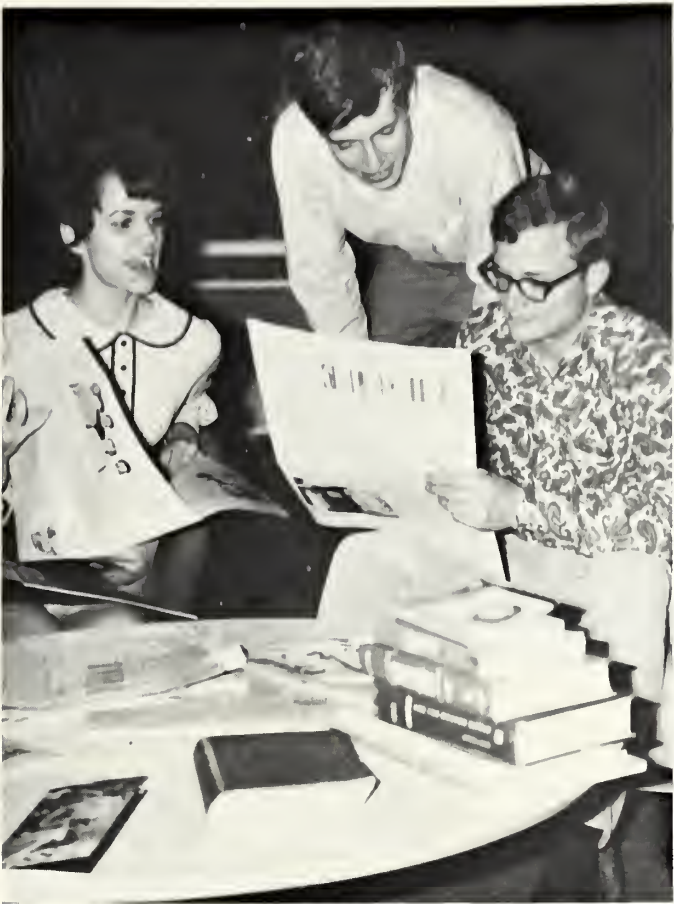
This year's Thresher received a new look mainly because of the larger page size. Other changes were color on the inside of the book, a larger section for school events, and the combining of underclassmen.

Editor Ann van der Weg looks at a copy of a Graymaroon of the 1930s.

To do away with the supplement, the annuals were printed during the summer months and delivered in the fall. Because of this, many hours were spent in June finishing up the book.

Student photographer Ralph Roberts picks out a negative for the yearbook.





Students show enthusiasm for the new Collegian issue in the Student Union.

The Collegian receives ACP All-American rating

The Bethel Collegian newspaper received its first All-American rating from the Associated Collegiate Press during the spring quarter of 1966. The good work was continued in 1967. Students were kept well informed about all news of campus interest. Besides giving students a chance to express opinions, the paper also gave practical experience in journalism. Fourteen six-page Collegians came out during the year.

Collegian editors, columnist and manager—Elvera Goering, David Janzen, Clayton Koppes, Jay Franz, Mork Stucky, Borbora Koppes, Dori Saltzman, Dennis Loepp. NOT PICTURED: Chuck Friesen.





Student Christian Fellowship Steering Committee—Esther Jantzen, Fred Dick, Richard Friesen, Robert Suderman, advisor. NOT PICTURED: William Juhnke, Jr.

SCF seminars promote thought on Christianity

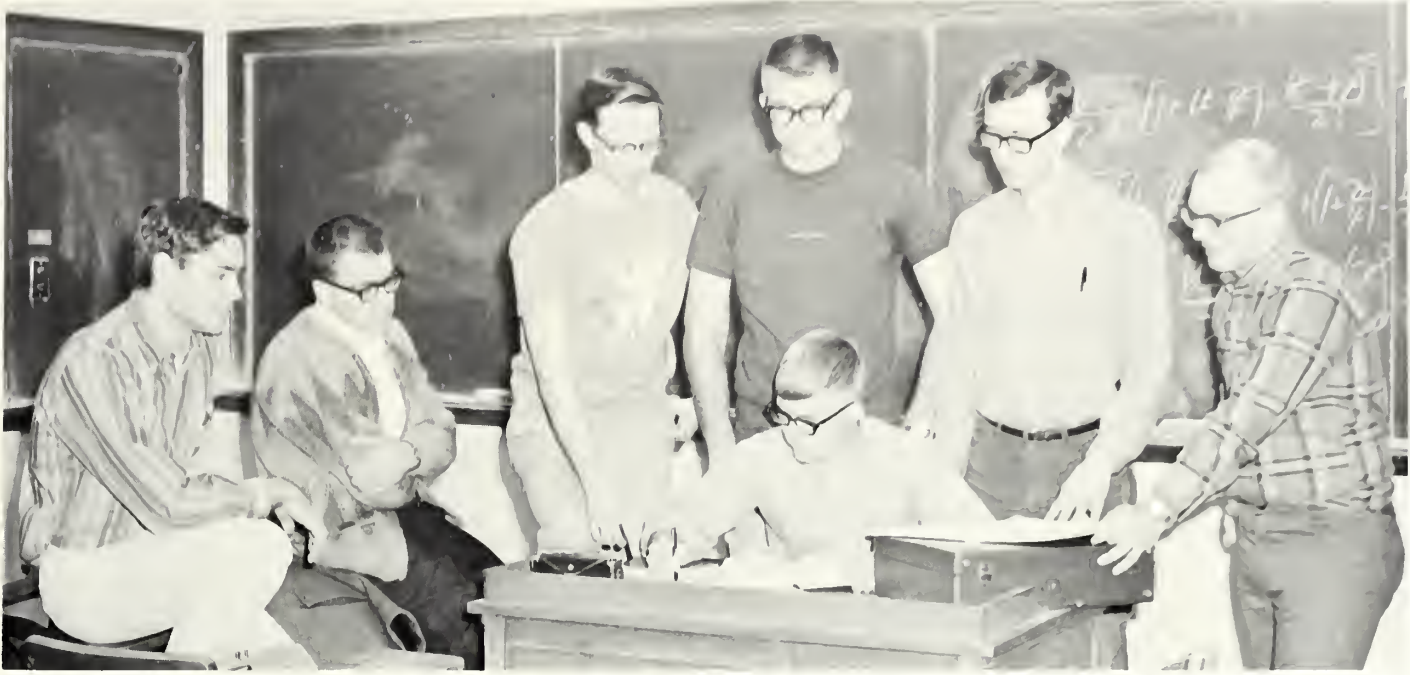
Student Christian Fellowship was organized to serve as a student fellowship promoting thought and discussion about Christianity and the church. The independent seminars or closed fellowship groups met once weekly.

Student Policies Committee discusses concern areas

The Student Policies Committee aided in forming policies and college standards. General areas of concern discussed this year were the dancing issue, foreign student aid, Bethel's role in relation to Selective Service and compulsory worship chapel.

Student Policies Committee—Esko Loewen, Keith Waltner, Judy Franz, Lynn Loucks, Paul Harms, Emerson Wiens, Howard Snider.





Math Club—Stanley L. Voth, Chuck Friesen, Daniel Gaedert, Joe Zerger, Elroy Friesen, Burton Kaufman.

Math Club holds informal meetings for math majors

The Math Club was organized by interested students to stimulate interest and participation in mathematics. Informal meetings were held periodically. The year was terminated by a party.

Secretarial Club—TOP ROW: Carolyn Stucky, Iris Ratzlaff, Margita Boschmann, Eileen Goerzen, Sharon Jantzen, Kathleen Ensz, Chris Stucky, Kaye Lehrman, Mary Janzen,

New Secretarial Club hears various speakers

Students interested in business and secretarial studies discussed office procedures and related subjects. Businessmen and secretaries were invited to speak at the monthly meetings. The group replaced the former Phi Beta Lambda.

Frances Deckert. BOTTOM ROW: Bernice Graber, Dorene Flaming, Gwen Voth.





Chapel Choir provides a special tenebrae service during Holy Week in the candlelit Bethel Church.

Chapel Choir provides worship music at services

To provide meaningful musical experience in a worship setting, the Chapel Choir sang at chapel services and at churches in the surrounding area. This year's special project was Bach's "See Ye, Behold What Love."

Madrigal Singers—Marlys Hofer, Dean Kroeker, Carita Preheim, Jerry Friesen, Sheryl Ratzlaff, Doug Huxman, Janeal Krehbiel, Dr. Suderman, director, Gary Epp,

Madrigals share songs with numerous audiences

The Madrigals presented a host of concerns this year. The purpose of the group was to acquaint its members with madrigal music and to share it with others. The highlight of the year was their appearance on the Campus Talent television program.

Beverly Peters, Duane Graber, June Graber, Gordon Funk, Deloris Schwartz, Stanley Penner.



Student Union Board plans ping-pong tourney

The Student Union Board's primary objective was to transform the Student Union into a place of activity. Besides searching for methods to improve the Inn and its atmosphere, other projects included rejuvenating a bumper pool table, a couch and converting a storage room into a Student Union office. During the winter quarter, the board sponsored a Ping-Pong tournament.

Development Committee discusses new coed dorm

The responsibility of the Planning and Development Committee was to promote plans in the overall area of campus facilities and needs. This included prospective planning and building development needs. The immediate concern of the committee was the new coed dormitory. Suggestions for facilities, furniture, and names were made.



Student Union Board—Charles Graber, Phil Dick, Twila Friesen, Daniel Gaeddert.

Planning and Development Committee — Ann van der Weg, Earl Koehn, John Schmidt, Doug Penner, Jay Franz, Merle Bender, Peter Kaufman. NOT PICTURED: Dwight Platt.





Woodwind Ensemble—Beverly Peters, Deloris Schwartz, Stanley Penner, Linda Koehn, Dean Kroeker.

Clarinet Choir—Javan Shelly, Mark Stucky, Linda Koehn, Deloris Schwartz, Bonnie Graber, LaVera Voth.



Small instrumental groups replace concert band

Because there were not enough students to form the usual concert band, small ensembles were formed instead. These ensembles were the woodwind, clarinet, saxophone and brass instrument groups. The brass ensemble was made up of Dean

Kroeker, Dwayne Schmidt, Bruce Schmidt and Terry Bontrager. A tour in northern states was made during the spring quarter break by several instrumental music students.



Saxophone Ensemble — Marilyn Riesen, Stanley Penner, Sharon Juhnke. NOT PICTURED: Charlene Schrag.



Religious Life Committee—Emerson Wiens, Fred Dick, Esko Loewen, Marianne Krahn, Kenneth Shelly, Robert Suderman. NOT PICTURED: Rodney Frey.

Religious Life Committee plans chapel presentations

The Religious Life Committee was faced with the challenging, interesting and sometimes tedious decisions of who shall speak or entertain at all the chapels and convocations of the school year. The committee also made suggestions for Christian Life Week and Holy Week programs.

Bethel College Choir—TOP ROW: Stanley Penner, John Fast, Ronald Stucky, Doug Huxman, Jerry Friesen, Alan Friesen, Craig Dorsing, Vyron Schmidt, Gordon Ratzlaff, Gordon Funk, Donald Mierau, Dean Kroeker, Herbert Johnson, Dale Schrag, Gary Epp, Director Walter Jost. SECOND ROW: Craig Challender, Stephen Fiol, Deloris Schwartz, Beverly Goering, Dolores Banman, Judy Franz,

College Choir anticipates 4th European concert tour

The College Choir had another busy year singing at various churches and presenting many concerts. The Choir made a tour in northern states in the spring, and in the summer will tour several European countries, also stopping at the Mennonite World Conference in Holland to sing there.

Kathy Regier, Beverly Peters, LaDeen Goering, Janeal Krehbiel, Clare Ann Ruth, Duane Graber, Ralph Bartel. FRONT ROW: June Graber, Carol Schmidt, Mary Jane Waltner, Carita Preheim, Pat Mueller, Karen Quiring, Janette Zercher, Charlene Schrag, Sherry Lakin, Frances Goering, Marlys Hofer.





One of the projects of Deutscher Verein was to provide entertainment at the biannual Mennonite Folk-Fine Arts Festival. Other projects included singing German folk

songs, viewing German films and developing language skills through other social activities.

Deutscher Verein learns German folk songs, games

Deutscher Verein—TOP ROW: Dr. Krahn, advisor, Elwood Friesen, Marianne Krahn, Ned Lakin, Mary Ann Graber, Mark Stucky, Arlene Nickel, Ruth Lohrenz, David Quiring.

BOTTOM ROW: Ann van der Weg, Ulrike Belzer, Beverly Vogts, Anna Sue Deckert, Terry Unruh.





SNEA Executive Committee—Carol Inghram, President; Elizabeth Becker, Vice-President; Justus Holsinger, Advisor; Helen Unruh, Secretary-Treasurer.

Speakers, panels, films, highlight SNEA activities

The Student National Educational Association attempts to broaden the perspectives of future teachers by instilling in them a sense of professional loyalty and acquainting them with the different aspects of teaching.

MENC seek enrichment in national association

Members of the local chapter of Music Educators National Convention attempt to enlighten themselves in the field of music education by participating in area and national conventions of music educators.

MENC—TOP ROW: Gary Epp, Dean Kroeker, Doug Huxman, Dr. David Suderman, advisor, Jerry Friesen, Craig Dorsing, Beverly Peters. BOTTOM ROW: Dolores Banman, Janeal Krehbiel, Marlys Hofer, Carol Schmidt, Vicky Friesen.





Educational Policies Committee—Betty Jean Graber, Paul Schrag, Clayton Koppes, Dr. J. L. Spaulding, Dr. Keith Sprunger, Dr. Robert Schmidt. NOT PICTURED: Mr. Justus Holsinger.

Ed. Policies Committee prepares new catalogue

The Educational Policies Committee is a student-faculty committee which meets to discuss educational matters of the college and to formulate policies in these matters. The committee's main job this year was to prepare the new school catalogue.

Recreation Council plans campus social activities

The Recreation Council provided stimulating social activities for the student body such as the showing of movies, and the planning of social mixers and hootenannies. Like other small committees, Rec. Council was appointed by Stuco.



Recreation Council — Patty Quiring, Jonelle Schmidt, Don Linscheid, Fred Dick, Loretta Hoard. NOT PICTURED: Burton Kaufman.



Cheerleaders—Karen Friesen, Jonelle Schmidt, Archie Schmidt, Patty Markento, Darla Bannan.

Thresher cheerleaders boost spirit at games

Arousing the enthusiasm of football fans at the Homecoming game are the five cheerleaders. They are wearing their maroon outfits; in the above picture they are shown wearing their new white outfits.



Letter Club builds Bethel through athletic activities

Sponsorship of events related to athletics was one way Bethel's varsity lettermen helped to create a positive relationship between the college athletic program and the community. The major project of the Letter Club each year is a men's Buffalo Barbecue. Green Bay quarterback Bart Starr was the featured speaker at this year's barbecue which was the largest in the event's 27-year history, with nearly 1,000 in attendance.

Lettermen also performed a number of service projects such as handing out programs at athletic events, participating in community recreation programs and helping purchase needed athletic equipment.

1967 Letter Club—TOP ROW: Rick Siebert, Alan Friesen, Howard Reimer, Doug Penner, Dennis Dueck, Dennis Loepp, David Jantzen, Marlow Graber, Frank Wedel, Stan Stucky, Mike Burnette. SECOND ROW: Ralph Bartel, Don Schmidt, Stuart Friesen, Bob Esau, Terry Love, Stanley L. Voth, Weston Stucky, Steve W. Goering, Vern Voth, Jay Goering, Jerry Hershberger, Delbert Gaede. BOT-TOM ROW: Jim Huxman, vice-president; Wayne Unruh, president; Marlin Friesen, secretary-treasurer.



Guests at this spring's Buffalo Barbecue discover one of the reasons for the popularity of the annual event is the barbecued buffalo.





Organ Guild—TOP ROW: Deloris Schwartz, Donna Falk, Verlene Epp, Twila Friesen, Vicky Friesen, Frances Goering, Eulene Friesen, Carol Schmidt, Esther Deckert, Anna

Sue Deckert, Ann Schmidt. BOTTOM ROW: Judy Bartel, Jay Franz, Bonnie Graber, John Fast, Alice Loewen, advisor.

19 show strong interest in Organ Guild local chapter

The Organ Guild provided opportunity for the amateur organist to expand his knowledge of organ music, types of organs, and other fields of related interest. The Bethel guild is a chapter of the American Guild of Organists.

Art Club—Martha Becker, Jane Douglass, Jan Adkins, Darvin Yoder, Loren Yoder, Leslie Leupp, Eileen Senner, Ann van der Weg, Robert Regier, advisor.

Art Club holds informal meetings for art majors

The Art Club had no officers and an unpredictable schedule. Activities during the year ranged from discussing French lithographs while sitting on the gallery floor to playing an oriental game at Mr. Regier's home.





Beta Kappa—STANDING: Kathy Kasper, advisor, Martha Becker, Pat Mueller, Bev Vogts, LaDeen Goering, Judy Friesen, LaVonne Goossen, Karen Friesen, Mary Jo Goering, Twila Friesen, Dorothy Nickel, Ann Zerger, Anna Sue Deckert, Frances Goering, Sharon Penner, Mary Ann

Graber. SEATED: Lois Foth, Mary Kay Janzen, Linda Eymann, Ann van der Weg. NOT PICTURED: Cheryl Dudte, Linda Hiebert, Marsha Hoffer, Jonelle Schmidt, Chris Stucky, Patty Warkentin.

Beta Kappa buys tablecloth, punch bowl for FAC

This was another busy year for the 25 Beta Kappa members. To carry out their purpose of service, the girls took care of concessions at football games, distributed Mem Hall Series posters, ushered at programs and planned Christmas and Easter service projects.

At the end of the year the organization planned an all girls' fashion show to recruit new members. The group also purchased a punch bowl set and tablecloth for the reception wing in the Fine Arts Center.



A bridal theme is carried out at the all girls' fashion show. The evening was planned to inform girls of the Beta Kappa organization.



Circle K—Ken Bumgarner, Don Linscheid, Bob Esau, Ralph Roberts, Dwayne Schmidt, Merle Bender, advisor, Paul Schrag.

Circle K organization small, willing to serve

The Circle K Club this year consisted of members who were willing to serve the campus and community. However, due to a late start, not many projects were carried out. Circle K also strives to develop leadership and character.

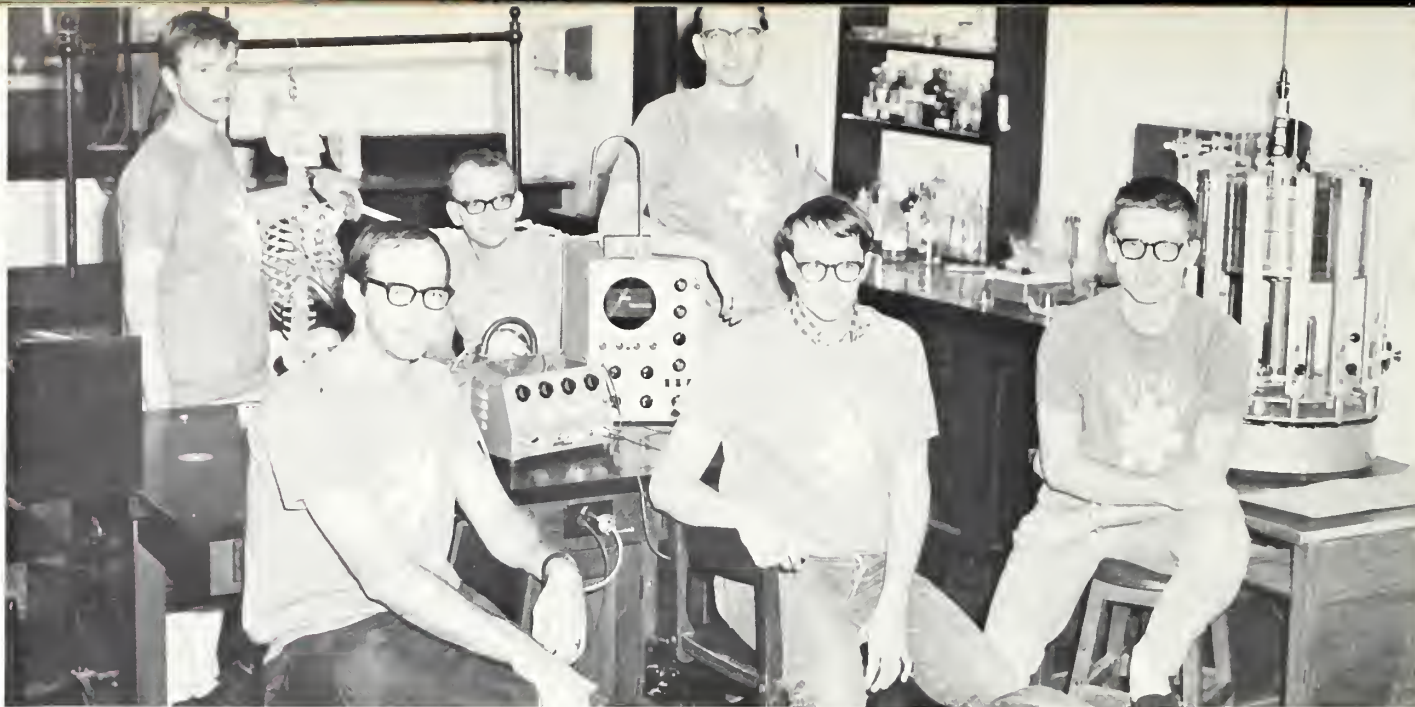
New Social Workers Club hears number of speakers

A new but active organization on campus this year was the Social Workers Club. Students interested in social work were invited to the meetings, which usually consisted of various speakers working in different areas of social work.

Social Workers Club—TOP ROW: Elvera Goering, Janette Zercher, Fred Dick, Cheryl Dudte, Jan Dick, Donna Graber, Barbara Zanki, Arlene Nickel, Camille Gross, Don Lin-

scheid, Duane Flaming, Howard Snider, advisor. BOT-TOM ROW: Anita Klaassen, Eugene Bergman, Ardean Goertzen, Ron Leupp, Gary Unruh, Rosemary Nikkel.





SH Club—TOP ROW: Charles Craig, Russell Hiebert, Daniel Gaeddert. BOTTOM ROW: Charles Graber, John

Senner, Keith Reimer. NOT PICTURED: A. Wayne Wiens, advisor.



International Relations Club—TOP ROW: Keith Sprunger, advisor, Jay Franz, David Janzen, Walter Epp, Terry Unruh, Fred Dick, Tom Fretz, Esther Jantzen, John Waltner, Lloyd Friesen. SECOND ROW: Peter Udofia,

Kathy Gaeddert, Allan Teichroew, Anita Klaassen, Sachiyo Kawasaki, Valerie Habegger, Richard Oden. FRONT ROW: Darlene Klassen, Donald Holsinger, Ardean Goertzen.

Science Hall Club strives to integrate nat. sciences

An attempt to develop closer relationships between various branches of science was the primary aim of the Science Hall Club. This year the club was also active in activities outside of the scientific area in the realm of campus activities and community projects.

World affairs discussed in International Relations

Vietnam, American foreign policy commitments and the John Birch Society vs. the UN were a few of the topics for discussion in International Relations this year. Meeting monthly, members of the club attempted to explore these and other affairs of contemporary interest.

"Courage to Be" studied by small Philosophy Club

This year students interested in philosophy held a number of symposiums with the major emphasis on Paul Tillich's book, *Courage to Be*. Open to non-philosophy majors as well as philosophy majors, the Philosophy Club gave students an opportunity for informal discussion.



Philosophy Club —
TOP ROW: John Kauffman, Mark Stucky, Richard Friesen, BOTTOM ROW: Ardean Goertzen, Richard Evans, Dr. Harold Gross, advisor. NOT PICTURED: Terry Unruh.

Le Cercle Francais—TOP ROW: Anna Sue Deckert, Steven L. Goering, Clare Ann Ruth, Dorothy Peters, Barbara Zanki, Sharon Unrau. SECOND ROW: Beverly Peters,

Dale Schrag, Beverly Vogts, Arlene Nickel, Mariam Schmidt, advisor. BOTTOM ROW: Janet Taylor, Cheryl Dudte, Peggy Goering.







President Voth seeks to improve communication

Serving Bethel as academic dean from 1966 until assuming the position of President on January 1, 1967 was Dr. Orville Voth of Salina, Kan.

As coordinator of the school, President Voth worked closely with the Board of Directors, the faculty and students. Much time was spent this year improving the communication between the constituency and the college in the self-study program.



President Voth and Dr. Gordon Kaufman at the presidential inauguration.

Bethel's eighth president is Dr. Orville Voth, a 1948 graduate of Bethel College.





Board of Directors—TOP ROW: Carl J. Richert, Richard F. Graber, Harold Voth, Virgil Flickinger—Secretary, Waldo H. Friesen, John C. Suderman—Treasurer, Clinton A. Kaufman, Arnold Nickel, John O. Schrag—Chairman, Walter E. Regier, Nick A. Klaassen. BOTTOM ROW: Carl

J. Claassen, Mrs. O'Ray Graber, Mrs. Willis E. Rich, Mrs. Leo Brandt, Dean Stucky—Vice-Chairman, Aaron J Epp, Arthur Waltner, Vernon Neufeld. NOT PICTURED: Stanley Bohn, John Ensz, W. E. Hieb, Gordon Kaufman, Willard Kaufman, Sam Sturm, Earl Unruh.

Assuming the duties as academic dean this year was **Justus G. Holsinger.**

Head of Student Personnel Services was Dean of Students, **Esko Loewen.**





Merle Bender, director of development, does much to improve the college image.



Preparing budgets and interpreting business affairs are directed by **Hartzel Schmidt**.

Directors of various areas serve Bethel well

Earl Koehn acts as purchasing agent and business manager of the physical plant.



Always busy in the dining hall is **Maxine Will**, director of food service.



An admissions counselor talks to several prospective students at the high school visitation day.

Admissions Counselors—STANDING: Ted Dreier, Randall Krehbiel. SEATED: William E. Juhnke.

Student registration 606, sets record enrollment

Bethel seeks to include in its student body persons of diverse backgrounds. In 1966-67 over 600 students from 24 states and 11 foreign countries enrolled. These students received instruction in 23 different fields and pre-professional training for such areas as the medical sciences and engineering.

The aim of the College is to select applicants who are qualified by ability, previous training, and purpose to pursue the courses offered. At the same time, students should offer high character, serious purpose and a cheerful acceptance of the objectives and practices of the school.

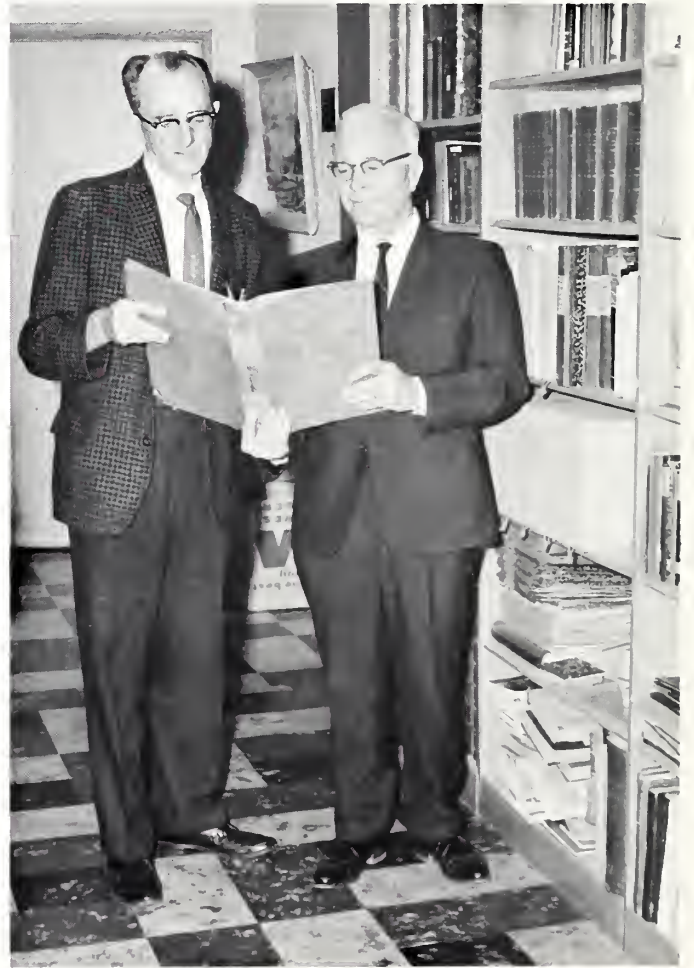




Advance registration of freshmen and new students takes place with advisors in the Administration Building.

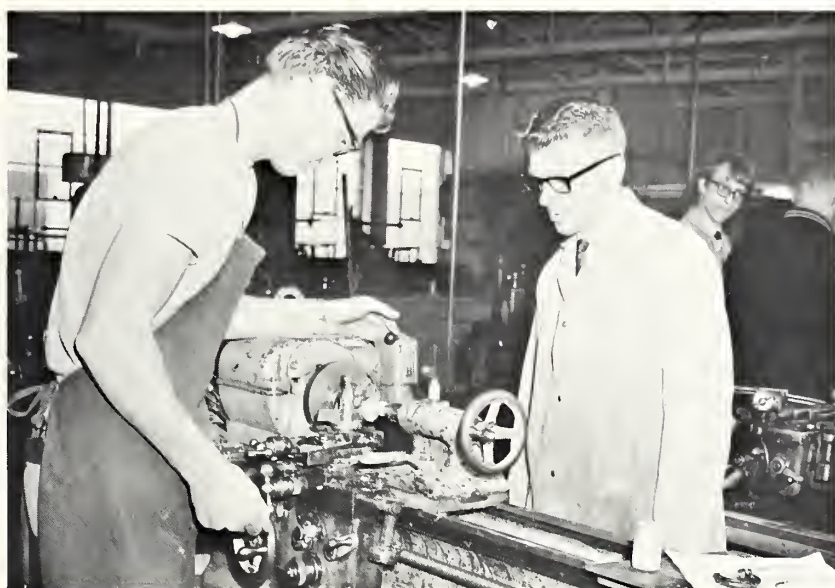
Looking over a newly-acquired collection in the Historical Library are the directors, **Cornelius Krahn** and **John F. Schmidt**.

Vernelle Waltner handles registration and compiling of student records as registrar and director of admissions.



Division of the Applied Sciences Faculty Members—TOP ROW: Mildred Beecher, physical education; Paul Hams, physical education; Ema Jeffries, home economics; Peter Kaufman, industrial arts. BOTTOM ROW: Virgil Penner, physical education; Eugene Reusser, physical education; Wilma Toews, home economics; Ruth Unrau, business; Emerson Wiens, industrial arts.

Part-Time Faculty not pictured—Ruthann Dirks, business; Wilma Unruh, nursing.



Applied Sciences develop practical knowledge

A student receives instructions in machine shop in Franz Shop.

Mr. Kaufman helps solve a drafting problem.



Preparing a meal for classmates is Marilyn Albrecht.





Division of the Humanities Faculty Members—TOP ROW: James Faul, music; Paul Friesen, art; Sue Haury, music; Walter Jost, music; Alice Loewen, music. BOTTOM ROW: J. Harold Moyer, music; Robert Regier, art; David Suderman, music; Jay Randall Zercher, music. **Part-Time Faculty** not pictured — Mary Ator, Dwight Beckham, Gary Fletcher, Celia Goering, Gertrude Olson, music; Reinhild Janzen, art.

Humanities Division uses verbal, nonverbal media

An advanced art lab student works on an oil painting.

The Chapel Choir director prepares students for a special concert.



Division of the Humanities Faculty Members—TOP ROW: Helena Andres, German; Honora Becker, English; Harold Gross, philosophy; Ada Mae Haury, speech. SECOND ROW: Anna Juhnke, English; Janet Juhnke, English; Arlo Kasper, drama; Cornelius Krahn, German. BOTTOM ROW: Leona Krehbiel, Librarian; Christine Miller, English; John F. Schmidt, speech; Mariam Schmidt, French. **Part-Time Faculty** not pictured — John Koppenhaver, Spanish.



Drama students learn to operate lighting equipment.

Bible, Religion Division offers theology, history

Division of Bible and Religion Faculty Members—Harold Gross, religion; Cornelius Krahn, church history; Robert Suderman, Bible.

Part-Time Faculty not pictured—Stanley Bohn, Bible and religion; Blanche Spaulding, Christian education.





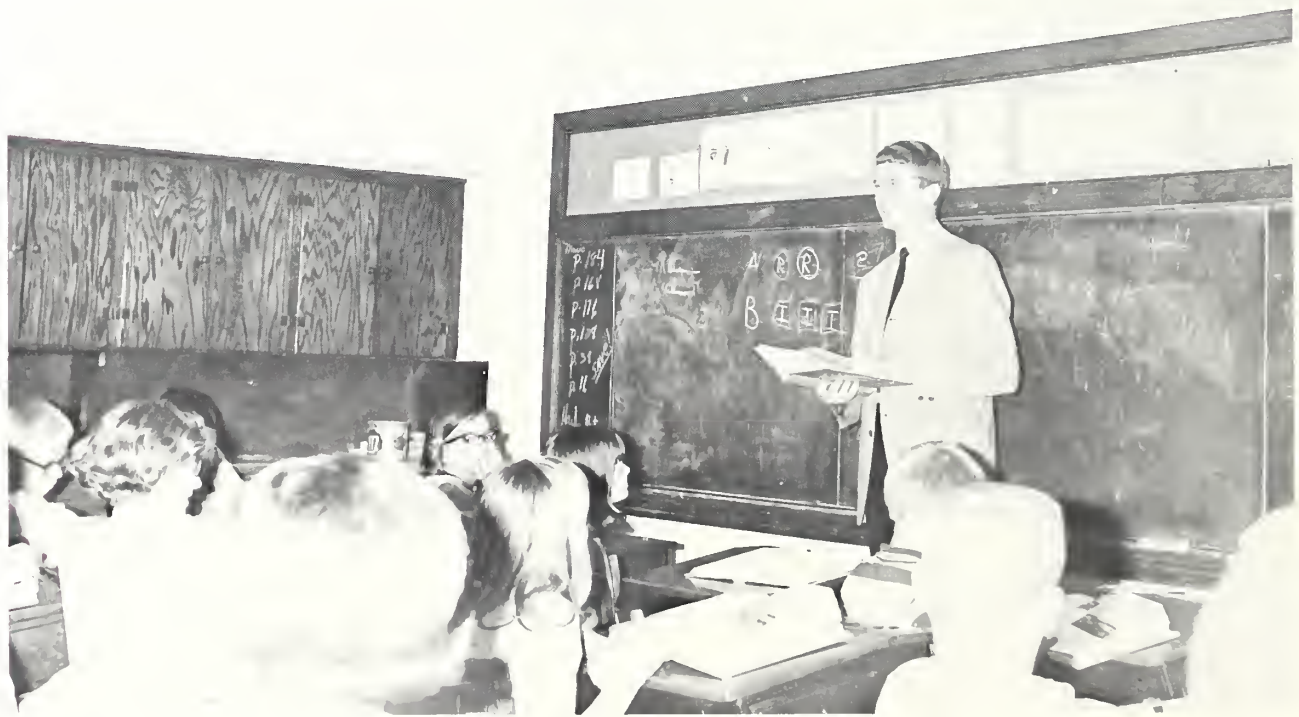
Division of Teacher Education Faculty Members — TOP ROW: Alvin Allen, education; Justus Holsinger, education; Dale Nebel, education; Melva Kauffman, education. **Part-Time Faculty** not pictured— Vincent Krabill.



A physical education major teaches high school students some soccer plays.

Future teachers trained in Education Division

An elementary education major practice teaches at a local grade school.





Natural science students are busily at work in one of the laboratories.



Natural Sciences

Division of the Natural Sciences Faculty Members—TOP ROW: Delbert Friesen, physics; Poul Harms, mathematics, physics; Dwight Platt, biology; Richard Rempel, mathematics. BOTTOM ROW: Ronold Rich, chemistry; Robert Schmidt, chemistry; Arnold Wedel, mathematics; A. Wayne Wiens, biology.

Part-Time Faculty not pictured—Orvin Voth, chemistry.

History, Social Sciences

Division of History, Social Sciences Faculty Members—TOP ROW: Alvin Allen, psychology; Bennie Borgen, economics; Nancy Hedrick, sociology. BOTTOM ROW: Howard Snider, sociology, psychology; J. Lloyd Spoulding, economics; Keith Sprunger, history. NOT PICTURED—John Jonzen, sociology, anthropology.

Part-Time Faculty not pictured—James Juhnke, history; Merrill Raber, psychology; Orlyn Zehr, sociology.





Associate Pastor Kenneth Shelly and Pastor Russell Mast are always willing to discuss religious problems with students at the Bethel College Mennonite Church. Resident students are urged to attend regularly the services of the church. The church also extends the privilege of associate membership to students.

Public Relations Department staff includes Vivian Leupp, admissions office secretary; Juanita Lehman, alumni and admissions secretary; Ilene Schmidt, administrative assistant in development; Monica Gross, director of news services.





Students Personnel office workers are Willene Bergman, secretary; Ina Bartel, secretary to the Dean of Students and Registrar; Martha Schroeder, secretary.



Bonnie Goering keeps busy as secretary to the President.



Delia Mae Graber serves as secretary to the Academic Dean.

Business Office personnel consists of Mary Klingenberg (seated); Garold Burkholder, assistant to the director of business affairs; Alice Terrill, Barbara Warkentine, cashiers.





Assistant Librarians Martha Smith and Louise Koehn work in a library of 54,530 holdings.

Goering Hall houseparents are Mr. and Mrs. Irvin Isaak.



Seeking employment for students is sophomore Paul Schrag.



Telephoning at the proctor's desk is Kathryn Kasper, WRH resident director.

Managing the college bookstore is Marlene Faul.





Maintenance personnel consists of Wilbert Reimer, chief engineer; Henry Friesen; Alan Unruh; Edward Claassen, assistant engineer; Irwin Friesen; O. Adrian; C. Gerhard; Paul Bartel; Henry Tangeman; C. Kliwer, chief custodian.

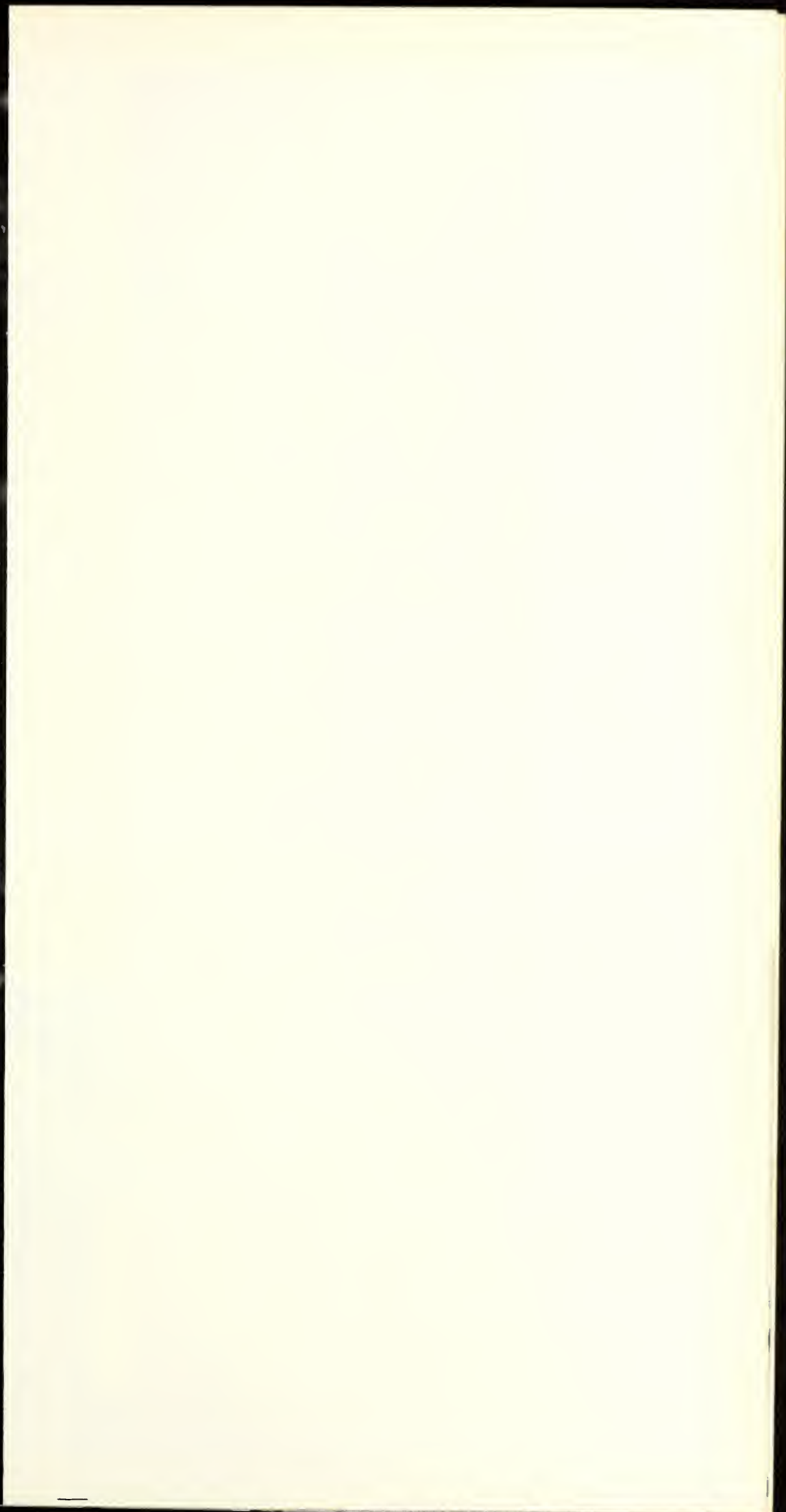
Maintaining dining hall cleanliness are Mrs. Henry Friesen and Melva Friesen.



Cooks preparing meals for many hungry stomachs are Elsie Harms, Lena Veendorp, Mary Schmidt, Luise Schmidt, Marie Schmidt, Ann Friesen.



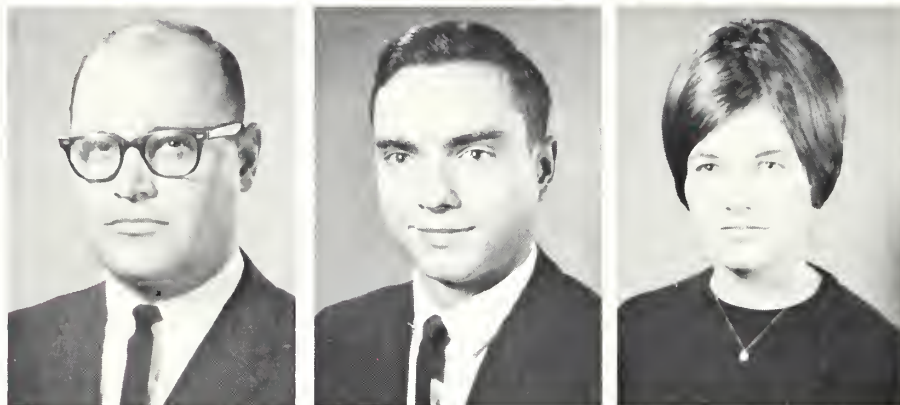




Seniors



Ethel Abrahams, Hillsboro, Art; **Janis Adkins**, Newton, Art and Elementary Education; **Marilyn Albright**, Pretty Prairie, Psychology.



James Andres, Newton, Industrial Arts; **George Arnold**, Hutchinson, Industrial Arts; **Elizabeth Becker**, Aberdeen, Ida., Elementary Education.



Marcos Calderon, Guatemala City, Guatemala, Biology; **Frieda Chaluj**, N. Newton, Nursing; **Ding-Yu Chung**, Bangkok, Thailand, Chemistry.

Responsible for carrying out senior class traditions are officers, Dick Evans, Vice-President; Jane Douglass, Secretary-Treasurer; Clayton Koppes, President.



Charles Craig, Newton, Chemistry; **Fred Dick**, Danvers, Ill., Social Sciences; **Jane Douglass**, Newton, Art.



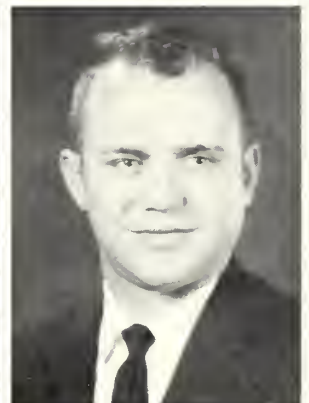
Dorothy Duerksen, Hillsboro, Home Economics; **Bonnie Epp**, N. Newton, Elementary Education; **Delmar Epp**, N. Newton, Social Sciences.



Garrett Epp, Fresno, Calif., Music; **Richard Evans**, Scott City, Sociology; **Donald Fast**, Henderson, Neb., Psychology.



John Fast, Mt. Lake, Minn., Music; **Stephen Fiol**, Kanpur, U.P., India, Music; **Dennis Flaming**, Hillsboro, Industrial Arts.



Judy Franz, Lind, Wash., Nursing Education; **Rodney Frey**, West Unity, Ohio, Industrial Arts; **Alvin Friesen**, Henderson, Neb., History.

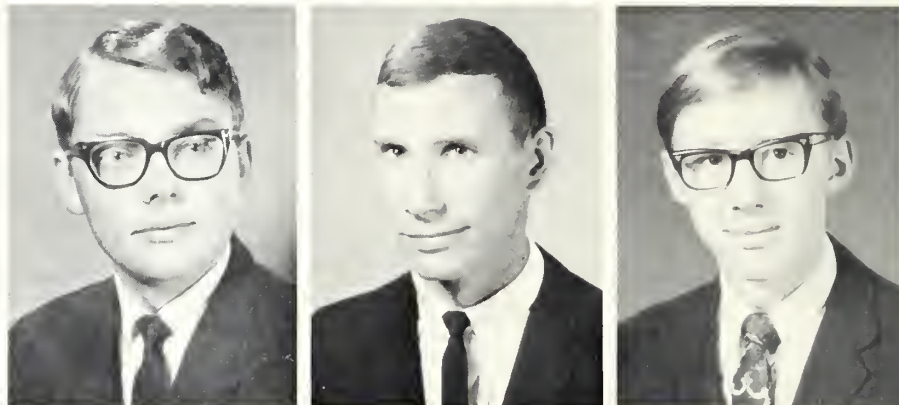


Seniors

Charles Friesen, Henderson, Neb., Mathematics; **Elaine Friesen**, Elkhart, Ind., Music; **Elroy Friesen**, N. Newton, Mathematics, Physics.



Elwood Friesen, Henderson, Neb., History; **Larry Friesen**, American Falls, Ida., English; **Lloyd Friesen**, Henderson, Neb., History.



Melvin Friesen, Aurora, Neb., Industrial Arts; **Tom Friesen**, Mt. Lake, Minn., Psychology; **Alice Funk**, N. Newton, Music.



Harold Funk, N. Newton, Social Science; **Daniel Gaeddert**, Wichita, Physics; **Diane Gering**, N. Newton, Physical Education.



Warren Gering, N. Newton, Industrial Arts; **Jay Goering**, Moundridge, Natural Sciences; **Ardean Goertzen**, Aurora, Neb., History.





Charles Graber, Freeman, S. D., Mathematics, Physics; **Mary Ann Graber**, Moundridge, Foreign Languages; **Peter Graber**, Stryker, Ohio, History.



Linda Hiebert, Aberdeen, Ida., Elementary Education; **Russell Hiebert**, Newton, Natural Science; **Roger Hofer**, N. Newton, History.

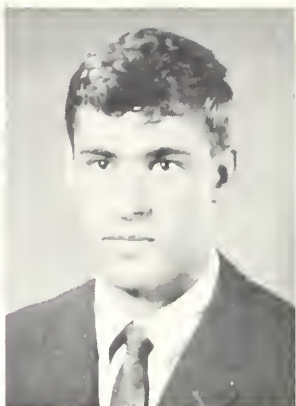


Carol Sue Inghram, Newton, English; **Irvin Isaak**, N. Newton, Social Studies and Physical Education; **Mary Kay Janzen**, Henderson, Neb., Elementary Education.

Deciding where to go after graduation can be frustrating. Most graduates enter the teaching vocation or go on to graduate school.



Seniors



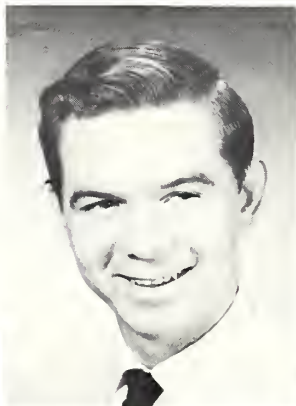
Esther Jantzen, Korba, M.P., India, English; **William Juhnke, Jr.**, McPherson, History; **Jerry Kagele**, Ritzville, Wash., Economics and Business Administration.



John Kauffman, Barlow, Ore., English and History; **Burton Kaufman**, Marion, S.D., Mathematics; **Roine Klassen**, N. Newton, Nursing Education.



Leon Kiewer, N. Newton, Economics and Business Administration; **Fred Klitzke**, Ransom, Medical Technology; **Roy Koehn**, N. Newton, Medical Technology.



Shirley Koehn, Greensburg, Physical Education; **Clayton Koppes**, N. Newton, History; **Marianne Krahn**, N. Newton, English and Elementary Education.



Betty Krehbiel, Kingman, Nursing Education; **Larry Krehbiel**, Kingman, Industrial Arts; **Henry Kroecker**, Chouteau, Okla., Music.

Samuel Lapp, N. Newton, Industrial Arts;
Lynn Loucks, Protection, Elementary Education;
Darlene Lowe, Newton, Elementary Education.



Roy Nelson, N. Newton, History and Social
 Science; **Rosemary Nikkel**, Canton, Psychol-
 ogy; **Ronald Peters**, Henderson, Neb., Physical
 Education.



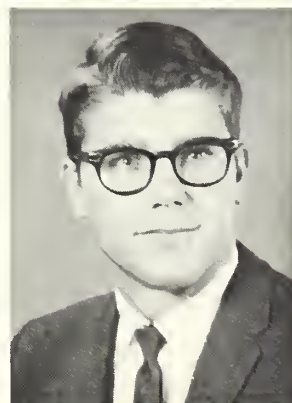
Willard Plenert, Hillsboro, Psychology, Eco-
 nomics and Business Administration; **Carita
 Preheim**, Marion, S.D., Nursing; **Karen Quiring**,
 Newton, Nursing.



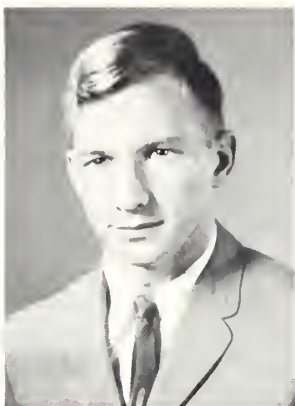
Gordon Ratzlaff, Wichita, English and Lan-
 guages; **Sheryl Ratzlaff**, Goessel, German;
Esther Rediger, Hesston, Elementary Education.



Paul Regier, Newton, History; **Keith Reimer**,
 N. Newton, Natural Science; **Susan Reimer**,
 N. Newton, Medical Technology.



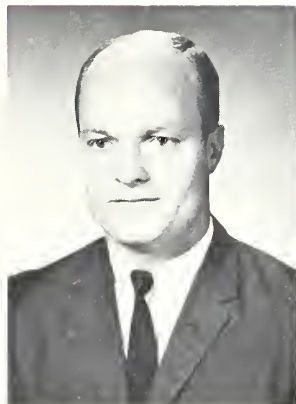
Seniors



Norma Reusser, N. Newton, Elementary Education; **Steven Schmidt**, Newton, Biology; **Jurgen Schonwetter**, Walton, Languages.



Judith Schrag, Clay Center, Elementary Education; **Eileen Senner**, N. Newton, Art; **John Senner**, N. Newton, Biology.



Donald Stucky, Newton, Industrial Arts; **Ethel Stucky**, Moundridge, Physical Education; **John Stucky**, Moundridge, Elementary Education.

Elnor Stutzman, Hesston, Nursing Education; **Margaret Thiessen**, Fitzmaurice, Sask., Canada, Elementary Education; **Walter Thieszen**, N. Newton, Social Sciences.



Peter Udofia, N. Newton, Sociology and History; **Wayne Unruh**, N. Newton, Physical Education; **Donna Voth**, N. Newton, English.



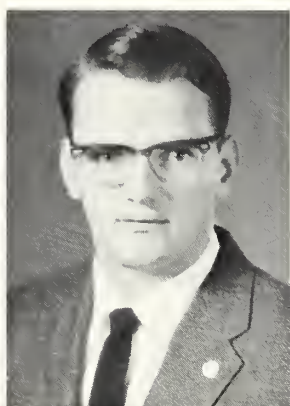
Stanley E. Voth, N. Newton, History; **Stanley Lee Voth**, Moundridge, Mathematics; **Keith Waltner**, Freeman, S.D., Industrial Arts.



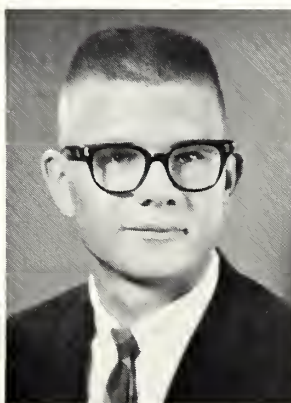
Lila Waltner, Moundridge, English; **Gladys Weinbrenner**, Lehigh, Elementary Education and Physical Education; **Ivan White**, N. Newton, Art.



Elsie Wiebe, N. Newton, Nursing; **Jacob Wiebe**, N. Newton, History; **Michael Wiebe**, Beatrice, Neb.



Walter Wiebe, N. Newton, Social Sciences; **Betty Woelk**, Newport, Wash., Elementary Education; **Margery Wohlgenuth**, Benton, Elementary Education.



John Zacharias, N. Newton, Social Sciences; **Joe Zerger**, McPherson, Mathematics.

Seniors not pictured listed on p. 144.

Undergraduates



John Bachman, Newton freshman; **Kathleen Balzer**, Whitewater sophomore; **Sondra Bandy**, Hesston freshman; **Darla Banman**, Hillsboro freshman.

Dolores Banman, N. Newton sophomore; **Janet Banman**, Hillsboro freshman; **Ardis Barham**, Newton freshman; **Harlan Bartel**, Hillsboro freshman.

Judith Bartel, N. Newton freshman; **Ralph Bartel**, Newton sophomore; **Eugene Becker**, Hillsboro junior; **Jerry Becker**, Liberal freshman.

Martha Becker, Aberdeen, Ida. junior; **Ulrike Belzer**, Remscheid-Lennep, Germany special; **Peter Bergen**, Luseland, Sask. sophomore; **Eugene Bergman**, N. Newton junior.

Rickey Black, Kansas City, Mo. freshman; **Rosemary Blair**, Portland, Ore. freshman; **Connie Boehr**, Blair, Neb. sophomore; **Anita Boese**, Lehigh, sophomore.

Terry Bontrager, Beloit freshman; **Harald Boschmann**, Asuncion, Paraguay freshman; **Hugo Boschmann**, Asuncion, Paraguay sophomore; **Margite Boschmann**, Asuncion, Paraguay freshman.

Flauretta Brandt, N. Newton junior; **Walter Brandt**, Newton freshman; **Gregory Brenne- man**, Washington, Iowa sophomore; **Jeffrey Brower**, Liberal freshman.



and Specials

Joe Buckland, Nardin, Okla. freshman; **Larry Buller**, Hillsboro freshman; **Kenneth Bumgarner**, Newton freshman; **Robert Burdette**, Valley Center junior.

Michael Burnett, Chicago, Ill. sophomore; **Craig Challender**, Sedgwick junior; **Steven Chambers**, Newton freshman; **Barbara Claassen**, Potwin freshman.

Eugene Claassen, Marlin, Wash. junior; **Margaret Claassen**, Beatrice, Neb. sophomore; **Gayle Consolver**, Wichita sophomore; **Leanne Converse**, Bennett, Colo. sophomore.

Jenelle Cook, Newton sophomore; **Doyle Dalke**, Halstead sophomore; **Robert Dalke**, Hutchinson sophomore; **Connie Davis**, Salina freshman.



Looking over art works at the Senior Art Exhibit are Junior Class Officers Bev Vogts, Secretary-Treasurer; Jay Franz, Vice-President; Betty Jean Graber, President.

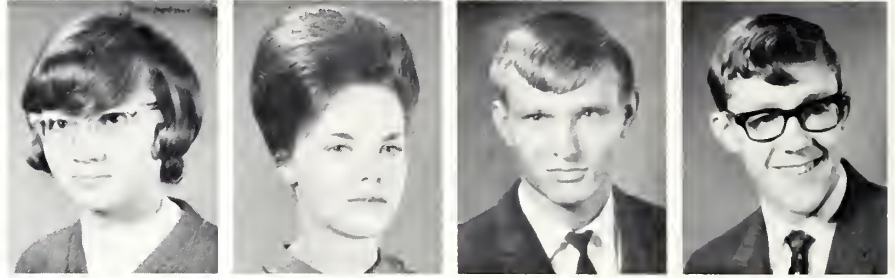


Undergraduates

Orie Davis, Newton freshman; **Karen Sue Decker**, Galva sophomore; **Anna Sue Deckert**, Pawnee Rock junior; **Esther Deckert**, Pawnee Rock freshman.



Frances Deckert, Pawnee Rock freshman; **Mildred Derksen**, Mt. Lake, Minn. junior; **Robert Dester**, Deer Creek, Okla. freshman; **Edward Dick**, Danvers, Ill. freshman.



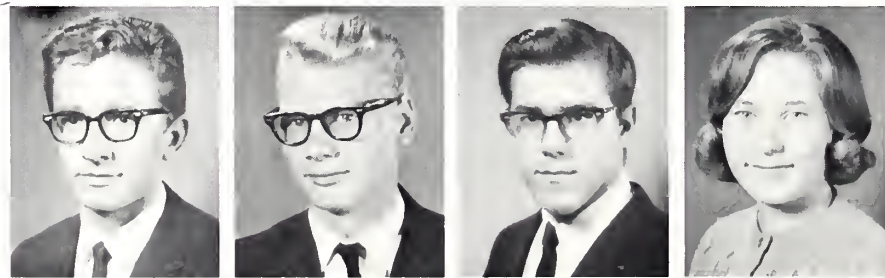
Jan Dick, Colorado Springs, Colo. freshman; **Philip Dick**, Danvers, Ill. sophomore; **Ronald Dietzel**, Newton sophomore; **Thaine Dirks**, Great Bend freshman.



Linda Doerksen, Inman freshman; **Margaret Doerksen**, Satanta freshman; **Craig Dorsing**, Othello, Wash. junior; **Charyl Dotson**, Jamestown sophomore.



Cheryl Dudte, Newton sophomore; **Dennis Dueck**, Lanigan, Sask. sophomore; **Barbara Duerksen**, Hillsboro freshman; **Lois Duerksen**, Hillsboro junior.



Leroy Dyck, Newton junior; **Max Dyck**, Newton freshman; **Gary Eason**, Newton freshman; **Nita Eberly**, Newton freshman.



Mary Eck, Wichita freshman; **Bruce Ediger**, Buhler sophomore; **Elaine Ediger**, N. Newton junior; **Ralph Ediger**, Inman junior.

and Specials



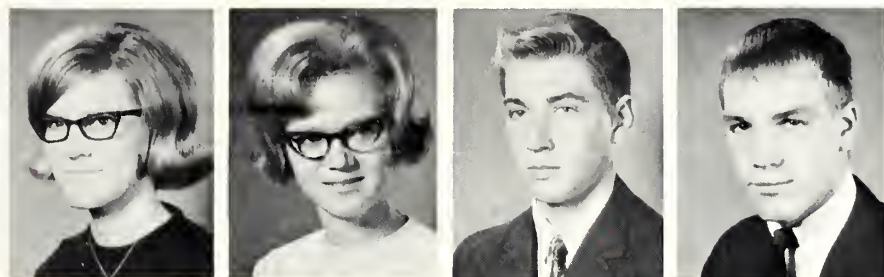
Ray Ediger, Inman freshman; **Warren Ediger**, Hillsboro freshman; **Stephen Edmonds**, Hillside, Ill. freshman; **Alan Ellicson**, Wilton, Conn. junior.



Anna Kay Emerson, Fisher, Ill. junior; **Kathleen Ensz**, Beatrice, Neb. freshman; **Loren Entz**, Newton freshman; **Arlen Epp**, Marion, S. D. junior.

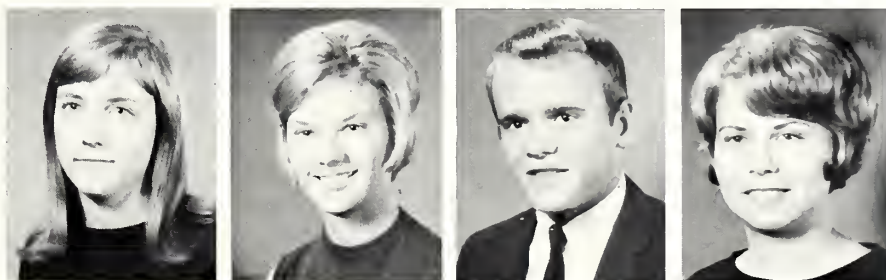


Barbara Epp, Newton freshman; **Delores Epp**, Buhler freshman; **LaJane Epp**, Inman sophomore; **Patricia Epp**, Goessel sophomore.



Rebecca Epp, Fresno, Calif. freshman; **Verlene Epp**, Henderson, Neb. freshman; **Walter Epp**, Langham, Sask. junior; **Robert Esau**, Scott City freshman.

Linda Eymann, Reedley, Calif. junior; **Donna Falk**, Mt. Lake, Minn. sophomore; **Alan Fleming**, Hillsboro freshman; **Dorene Fleming**, Hillsboro freshman.



Duane Fleming, Hillsboro junior; **John Florez**, Newton freshman; **Lois Foth**, Cordell, Okla. Junior; **Jay Franz**, Ritzville, Wash. junior.



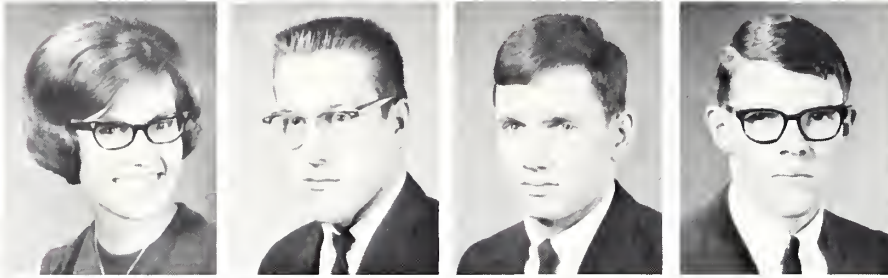
Gary French, Great Bend freshman; **Thomas Fretz**, Waterloo, Ont. sophomore; **Alan Friesen**, Regina, Sask. sophomore; **Charlene Friesen**, Henderson, Neb. special.



Undergraduates



Dale Friesen, American Falls, Ida. sophomore; **Eulene Friesen**, Omaha, Neb. junior; **Jerry Friesen**, Henderson, Neb. sophomore; **Judith Friesen**, Hutchinson junior.



Karen Friesen, Hutchinson sophomore; **Marlin Friesen**, N. Newton junior; **Merle Friesen**, American Falls, Ida. sophomore; **Richard Friesen**, Reedley, Calif. sophomore.



Robert Friesen, Newton sophomore; **Ruth Ann Friesen**, Newton freshman; **Stuart Friesen**, Henderson sophomore; **Twila Friesen**, Henderson, Neb. sophomore.



Vicky Friesen, Henderson, Neb. sophomore; **Dayle Funk**, Marion freshman; **Elaine Funk**, Hillsboro freshman; **Gordon Funk**, Newton junior.



Loretta Funk, Hillsboro freshman; **John Gaeddert**, Wichita freshman; **Kathryn Gaeddert**, Geneva, Neb. sophomore; **Delbert Gaede**, Hillsboro freshman.



Beverly Goering, Moundridge freshman; **Bonnie Goering**, Newton special; **Elvera Goering**, McPherson junior; **Frances Goering**, Halstead sophomore.



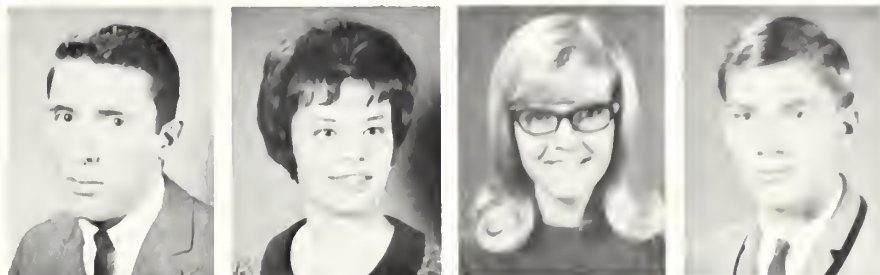
Jack Goering, Moundridge freshman; **Joan Goering**, Moundridge freshman; **Karen Ann Goering**, Moundridge freshman; **Karen Faye Goering**, McPherson freshman.

and Specials

LaDeen Goering, Normal, Ill. junior; **Peggy Goering**, Lehigh freshman; **Pete Goering**, Lehigh freshman; **Steven L. Goering**, Moundridge junior.



Steven W. Goering, McPherson junior; **Suzette Goering**, Galva freshman; **Edith Goertz**, Lehigh junior; **Henry Goertz**, Peabody freshman.



Joyce Goertzen, Mt. Lake, Minn. sophomore; **Richard Goertzen**, Hillsboro freshman; **Eileen Goertzen**, Newton freshman; **Ervin Goossen**, Hillsboro sophomore.



LaVonne Goossen, Hillsboro sophomore; **Sharon Goossen**, Hillsboro junior; **Mary Ellen Gore**, Larned sophomore; **Bernice Graber**, Pretty Prairie sophomore.



"All you have to tell 'em is that you absolutely refuse to wear that name tag."

"Remember, now, I'm an artist. Don't cut it too short."



Undergraduates



Betty Elaine Graber, Pretty Prairie sophomore; **Betty Jean Graber**, Pretty Prairie junior; **Bonnie Graber**, Moundridge sophomore; **Donna Graber**, Moundridge sophomore.



Duane Graber, N. Newton junior; **Judith Graber**, Kingman freshman; **June Graber**, Hurley, S. D. junior; **Marlow Graber**, Pretty Prairie freshman.



Melvin Graber, Moundridge freshman; **Sharon Graber**, Hurley, S. D. freshman; **Lynn Groff**, Manheim, Pa. junior; **Camille Gross**, N. Newton freshman.

Cheryl Gross, N. Newton freshman; **Wanda Guhr**, Lehigh freshman; **Valerie Habegger**, Reedley, Calif. sophomore; **Joyce Hackler**, El Dorado freshman.



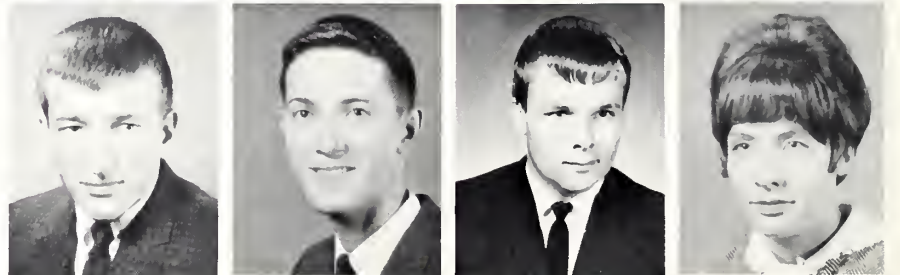
Jake Harder, Mt. Lake, Minn. sophomore; **Joann Harder**, Whitewater freshman; **Margaret Harder**, Mt. Lake, Minn. sophomore; **Helen Harms**, American Falls, Ida. sophomore.



Janet Harnish, Newton junior; **Ernest Harris**, Newton freshman; **LeRoy Harris**, Berkeley, Ill. freshman; **Donna Hendrickson**, Franklin, N. Y. sophomore.



Jerry Hershberger, Iowa City, Iowa junior; **Wilbur Hershberger**, Nappanee, Ind. sophomore; **George Hiebert**, Mt. Lake, Minn. sophomore; **Marjorie Hiebert**, Mt. Lake, Minn. sophomore.



and Specials

Robert Hiebert, Mt. Lake, Minn. sophomore;
Raylene Hinz, Liberal freshman; **Loretta Hoard**,
 Chicago, Ill. sophomore; **Marlys Hofer**, N.
 Newton junior.

Rodney Hofer, Bridgewater, S. D. freshman;
Marsha Hoffer, Aberdeen, Ida. sophomore;
Donald Holsinger, Hesston freshman; **Darlene
 Horst**, Leolo, Pa. sophomore.

Loren Huse, Americon Falls, Ido. freshman;
James Huxman, N. Newton junior; **John Hux-
 man**, Moundridge sophomore; **Joleen Huxman**,
 Pretty Prairie freshman.



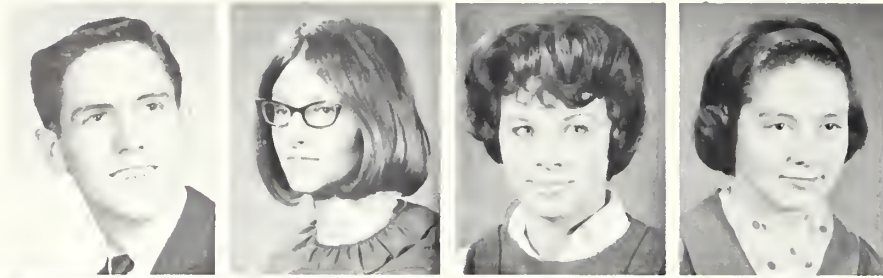
Douglas Inghram, N. Newton freshman; **Nor-
 ma Jackson**, Newton freshman; **Allen Jantz**,
 Newton freshman; **Donald Jantz**, Shownee
 Mission sophomore.

Gary Jantz, Newton freshman; **David Jantzen**,
 Beatrice, Neb. junior; **Mary Jantzen** Beatrice,
 Neb. sophomore; **Ruby Jantzen**, Beatrice, Neb.
 freshman.

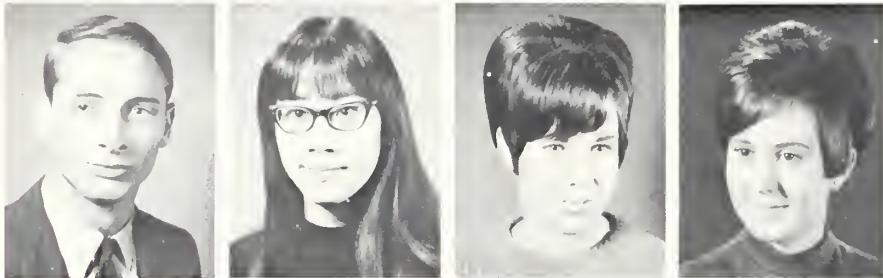
Sharon Jantzen, Ringwood, Okla. sophomore;
David Janzen, Hillsboro sophomore; **John
 Alan Janzen**, Mt. Lake, Minn. sophomore;
John Mark Janzen, Newton special.

Kenneth Janzen, Henderson, Neb. freshman;
Mark Janzen, Newton junior; **Stephen Jeffer-
 son**, Newton freshman; **Herbert Johnson**, Hol-
 lond, Ohio junior.

Undergraduates



Stephen Johnson, Udall sophomore; **Sharon Juhnke**, McPherson freshman; **Cheryl Kaufman**, Moundridge freshman; **Mary Kaufman**, Windom freshman.



Randall Kaufman, Windom sophomore; **Sachiko Kawasaki**, Tokyo, Japan sophomore; **Karen Keller**, Halstead freshman; **Kathleen Kerbs**, Newton special.



Amy Beth Klaassen, Burrton freshman; **Anita Klaassen**, Laird, Sask. junior; **Darlene Klassen**, Mt. Lake, Minn. sophomore; **James Klassen**, Lebanon sophomore.



LaVerne Klassen, Buhler sophomore; **Lillian Klassen**, Richmond, B. C. freshman; **Clarice Knak**, Hillsboro sophomore; **Harry Koehn**, Greensburg freshman.

Having yearbook pictures taken can be a long wait for some and a time for visiting for others.



and Specials

Linda Koehn, Newton freshman; **Philip Koontz**, Hillsboro freshman; **Theodore Koontz**, Hillsboro junior; **Carol Koop**, Henderson, Neb. junior.

Donna Kopper, Arlington sophomore; **Barbara Koppes**, N. Newton freshman; **Karla Krahn**, N. Newton freshman; **Janeal Krehbiel**, N. Newton junior.

Michael Krehbiel, McPherson sophomore; **Glen Kroeker**, Henderson, Neb. sophomore; **Ned Lakin**, Salina sophomore; **Sherry Lakin**, Salina freshman.

Karen Lee, Hanover junior; **Charles Lehman**, Mt. Lake, Minn. sophomore; **Linda Lehman**, Newton freshman; **Kaye Lehrman**, Newton freshman.

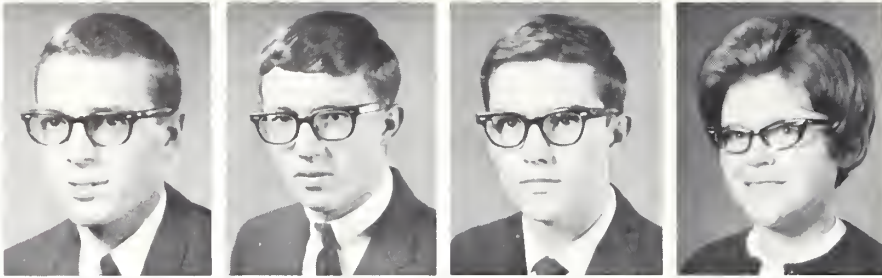
Leslie Leupp, Archbold, Ohio junior; **Ronald Leupp**, N. Newton junior; **Donald Linscheid**, Aberdeen, Ida. sophomore; **Ruth Linscheid**, Goessel junior.

Dennis Loepp, Turpin, Okla. sophomore; **Margaret Loewen**, Mt. Lake, Minn. freshman; **Sharon Loewen**, Newton sophomore; **Raymond Loewer**, Branch, La. sophomore.

Ruth Lohrenz, Chariton, Iowa freshman; **Terry Love**, Calumet City, Ill. sophomore; **Gary Lyndaker**, Lowville, N. Y. junior; **James Mast**, N. Newton sophomore.



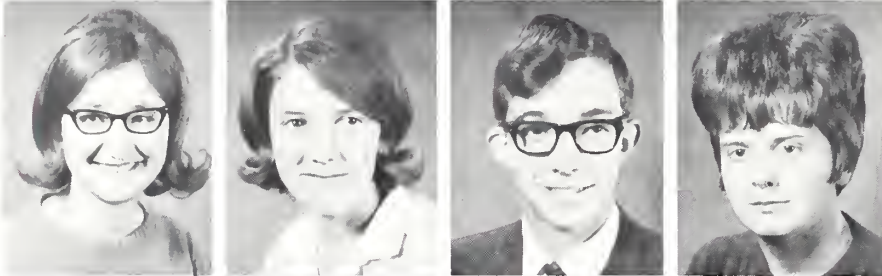
Undergraduates



Terry Mayhill, Newton freshman; **Donald Mierau**, Henderson, Neb. sophomore; **Thomas Mierau**, Henderson, Neb. sophomore; **Carol Miller**, Edgerton, Ohio freshman.



Marvin Miller, Hesston junior; **Martin Model**, Brooklyn, N. Y. sophomore; **Gloria Moore**, Chicago, Ill. freshman; **Madeline Morgan**, Chicago, Ill. freshman.

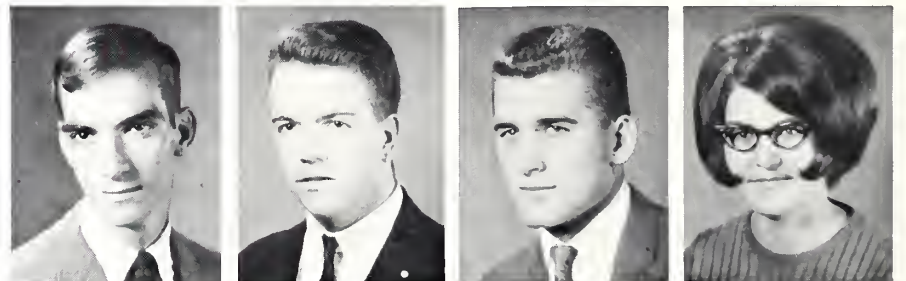


Pat Mueller, Newton sophomore; **Dorothy Nachtigal**, Buhler freshman; **Samuel Nance**, Newton sophomore; **Katherine Nettleton**, Newton sophomore.



Susan Neufeld, Fallbrook, Calif. sophomore; **Arlene Nickel**, Mt. Lake, Minn. sophomore; **Dorothy Nickel**, Mt. Lake, Minn. sophomore; **William Nickel**, Hillsboro, freshman.

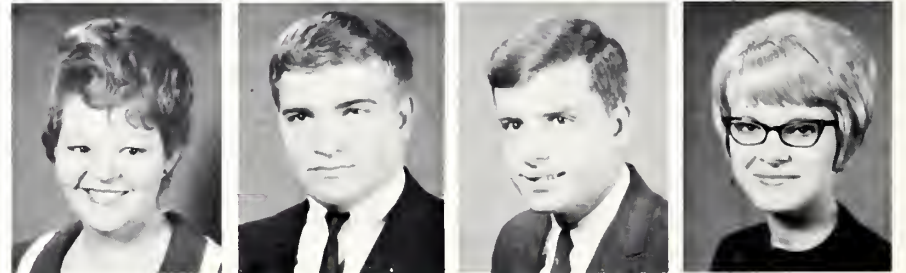
Richard Oden, Frederick, Md. freshman; **Eugene O'Neill**, Northford, Conn. freshman; **Stanley Osborne**, Hesston freshman; **LaVerna Ott**, Henderson, Neb. freshman.



David Painter, Parsons freshman; **Joe Palacios**, Newton freshman; **Barbara Pankratz**, Mt. Lake, Minn. sophomore; **James Parker**, Logan sophomore.



Joyce Parker, Logan freshman; **Mark Pasdiora**, Prospect Heights, Ill. sophomore; **Michael Patzke**, Northford, Conn. freshman; **Karla Pauls**, Inman freshman.



and Specials

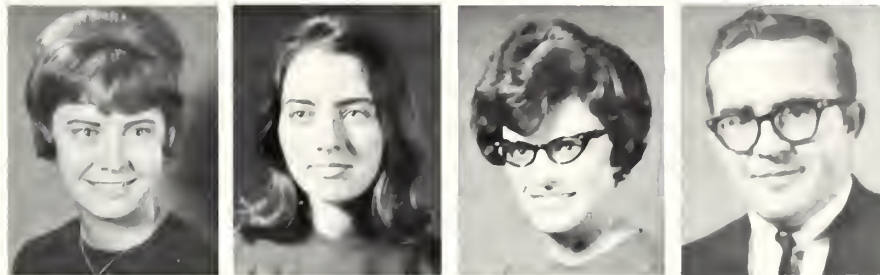
Douglas Penner, Reedley, Calif. sophomore; **Sharon Penner**, Turpin, Okla. sophomore; **Stanley Penner**, Hillsboro freshman; **Arlene Peters**, Marion freshman.



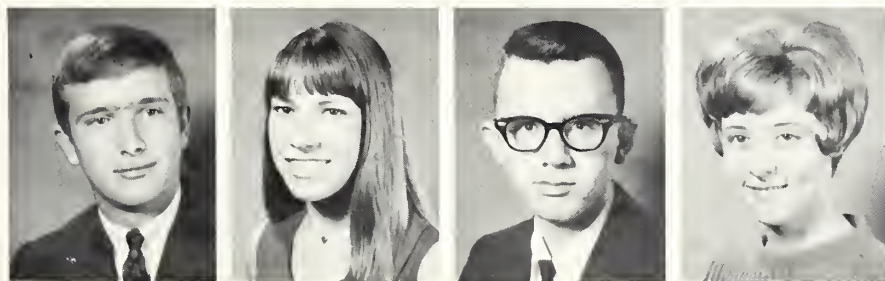
Beverly Peters, Hesston junior; **Carol Peters**, N. Newton sophomore; **Carolyn Peters**, Sutton, Neb. sophomore; **Dorothy Peters**, Lushton, Neb. special.



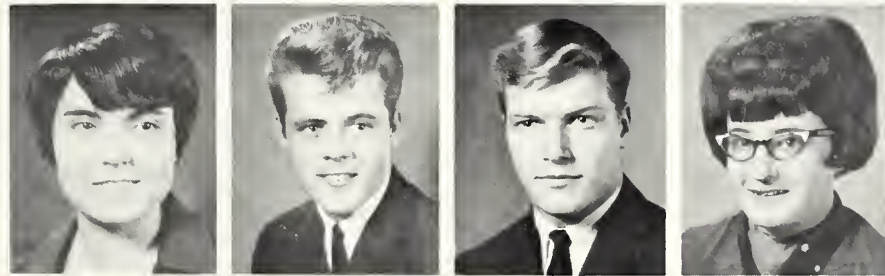
Janice Peters, Hesston freshman; **Kathleen Peters**, Walton junior; **Linda Peters**, Aurora, Neb. freshman; **Stanley Peters**, Henderson, Neb. sophomore.



Carroll Peterson, Mt. Pleasant, Iowa sophomore; **Cathryn Plett**, Leon sophomore; **Laurel Preheim**, Marion, S. D. sophomore; **Willie Price**, Bassfield, Miss. junior.



David Quiring, Swift Current, Sask. sophomore; **Patricia Quiring**, Las Vegas, Nev. sophomore; **Thomas Quiring**, Newton freshman; **Cheryl Ratzlaff**, Hampton, Neb. sophomore.



Iris Ratzlaff, Lehigh freshman; **James Reed**, Guilderland Center, N. Y. freshman; **Dennis Regier**, Burnaby, B. C. freshman; **Emily Regier**, Newton sophomore.



James Regier, Madrid, Neb. junior; **Kathy Regier**, Moundridge sophomore; **LaDonna Regier**, Moundridge sophomore; **Lonny Regier**, Turpin, Okla. sophomore.

Undergraduates

Marlene Regier, Newton freshman; **Wayne Regier**, Newton freshman; **Betty Reimer**, N. Newton junior; **Delbert Reimer**, Walton freshman.

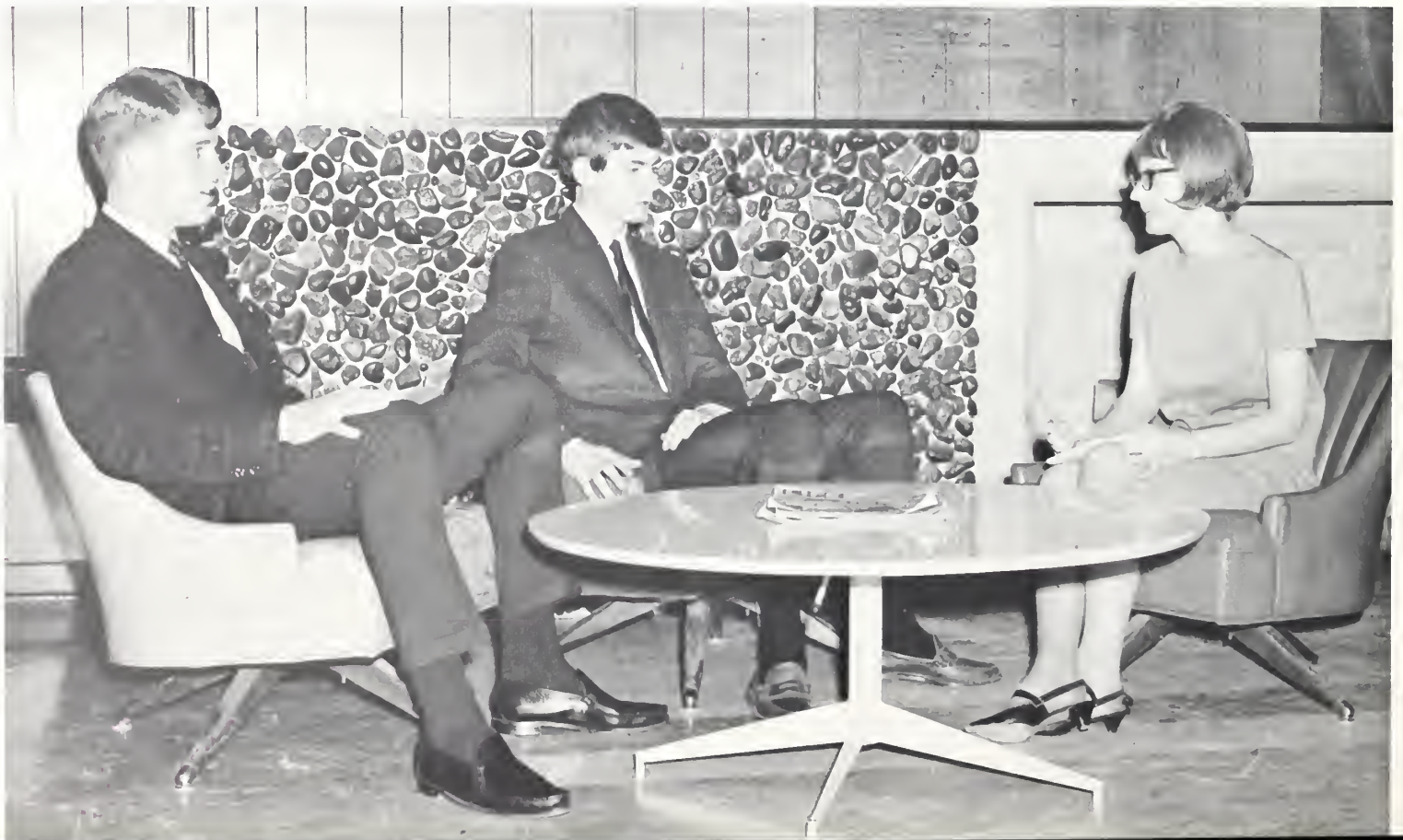
Howard Reimer, Hesston freshman; **Michael Reimer**, Wichita special; **Betty Lou Richert**, Newton special; **Jeanette Richert**, Newton freshman.

Marilyn Riesen, Hillsboro freshman; **Chester Roberts**, Hutchinson sophomore; **Ralph Roberts**, Newton junior; **Sharon Roth**, Milford, Neb. freshman.

Kenneth Roupp, Hubbard, Ore. sophomore; **Clare Ann Ruth**, Reedley, Calif. freshman; **Roger Rutschman**, Newton sophomore; **Aldora Saltzman**, Milford, Neb. freshman.



Taking time out for a picture in the Student Union are Sophomore Class Officers, Doug Penner, Vice-President; Allan Teichroew, President; Frances Goering, Secretary-Treasurer.



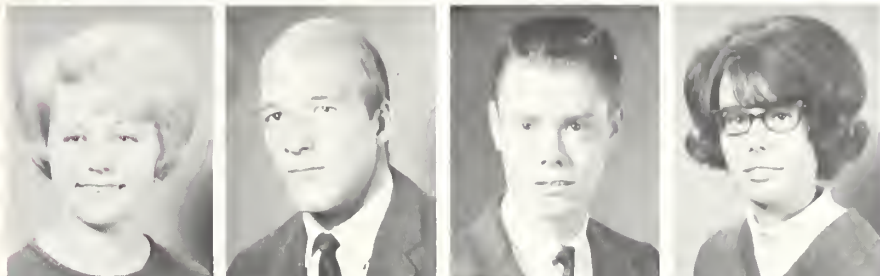
and Specials



Michael Saunders, Elba, N. Y. freshman; **Kay Frances Scharping**, Hillsboro freshman; **Ann Schmidt**, Pawnee Rock freshman; **Archie Schmidt**, Walton freshman.



Bonnie Schmidt, Parker, S. D. junior; **Bruce Schmidt**, Canton freshman; **Carol Schmidt**, Beatrice, Neb. sophomore; **Carol Schmidt**, Hesston sophomore.



Eileen Schmidt, Newton junior; **Donald Schmidt**, Pawnee Rock sophomore; **Dwayne Schmidt**, Moundridge freshman; **Jolene Schmidt**, Lehigh freshman.



Jolene Schmidt, Newton sophomore; **Jonelle Schmidt**, Leoti junior; **Mary Jo Schmidt**, Buhler junior; **Susan Schmidt**, Newton freshman.

Vyron Schmidt, Newton freshman; **Charlene Schrag**, Moundridge junior; **Dale Schrag**, McPherson sophomore; **Gloria Schrag**, Moundridge freshman.



Lonnie Schrag, Moundridge freshman; **Paul Schrag**, Kingman sophomore; **Janet Schroeder**, Hillsboro junior; **Marilyn Schroeder**, Mt. Lake, Minn. freshman.



Mary Schroeder, Walton junior; **Myron Schroeder**, Hagerstown, Md. sophomore; **Ronda Schroeder**, American Falls, Ida. freshman; **Deloris Schwartz**, Pretty Prairie freshman.



Undergraduates



David Selzer, Protection freshman; **Grace Selzer**, Protection junior; **Rachel Senner**, Buhler junior; **Roberta Senner**, Buhler freshman.



Javan Shelly, Newton freshman; **Elaine Siebert**, Henderson, Neb. freshman; **Rick Siebert**, Henderson, Neb. freshman; **Jeanee Skindeliski**, Ardsley, Pa. sophomore.



Douglas Smith, Newton freshman; **James Smith**, Newton freshman; **Elva Sommerfeld**, Halstead freshman; **William Soper**, Newton freshman.



Frederick Spinder, Newton sophomore; **Martha Stanley**, Earlham, Iowa sophomore; **Arlene Strausz**, Buhler junior; **James Strausz**, Moundridge freshman.

Posing pretty in an antique car in the Kauffman Museum are Freshman Class Officers Ed Dick, President; George Waddles, Vice-President; Judy Graber, Secretary-Treasurer.





Straining to get the ball for the Thresherettes is Karen Lee. The team's record was spotless this year.



An ardent football fan watches the Baker-Bethel game in a steady downpour. This was the season's first game.

and Specials

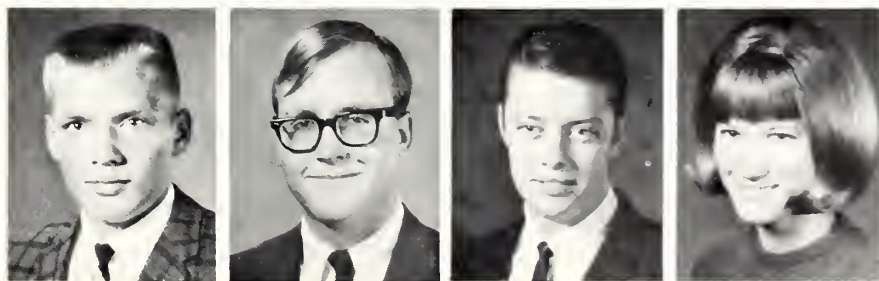
David Stroud, Newton junior; **Carolyn Stucky**, Moundridge freshman; **Christine Stucky**, McPherson sophomore; **Weston Stucky**, Moundridge junior.



Darrell Stucky, Moundridge freshman; **Donna Stucky**, Moundridge sophomore; **James Stucky**, Newton sophomore; **LeAnn Stucky**, Moundridge freshman.



Lyle Stucky, McPherson freshman; **Mark Stucky**, Wichita sophomore; **Ronald Stucky**, Moundridge sophomore; **Sandra Stucky**, Phoenix, Ariz. freshman.



Undergraduates

Stanley Stucky, Pretty Prairie freshman; **Toby Stucky**, McPherson freshman; **Jean Sutherland**, Newton special; **Duane Swartzendruber**, Kallona, Iowa sophomore.

Omar Swartzendruber, Limon, Colo. junior; **David Tashner**, Bath, Pa., freshman; **Janet Taylor**, Wichita freshman; **Allan Teichroew**, Mt. Lake, Minn. sophomore.

C. Forrest Tupper, Weskan junior; **Cheryl Ulrich**, Roanoke, Ill. junior; **Sharon Unruh**, Inola, Okla. sophomore; **Caroline Unruh**, Freeman, S. D. freshman.



Clara Unruh, Cimarron sophomore; **Debra Unruh**, Waukomis, Okla. freshman; **Dennis Unruh**, Newton freshman; **Donna Unruh**, Newton freshman.

Gary L. Unruh, Larned sophomore; **Gary M. Unruh**, Harper junior; **Gerald Unruh**, Bloomfield, Mont. special; **Helen Unruh**, N. Newton junior.

Iris Unruh, Burrton freshman; **Lee Ann Unruh**, Freeman, S. D. junior; **Margaret Unruh**, Galva freshman; **Marilyn Unruh**, Excelsior Springs, Mo. junior.

Steven Unruh, Greenwich, Conn. freshman; **Terrill Unruh**, Newton freshman; **Ann van der Weg**, Newton sophomore; **Beverly Vogts**, Moundridge junior.

and Specials



Gwen Voth, Newton freshman; **LaVera Voth**, Newton freshman; **Loretta Voth**, Newton sophomore; **Roberta Voth**, Newton freshman.

Verne Voth, Moundridge sophomore; **George Waddles**, Wichita freshman; **Richard Walker**, Newton freshman; **John Wall**, Newton sophomore.

Carol Waltner, N. Newton freshman; **John Waltner**, N. Newton junior; **Mary Jane Waltner**, N. Newton freshman; **Pamela Warkentin**, Atlanta, Ga. sophomore.

Students go through the line to try some old-fashioned German cooking at the Fine Arts-Folk Festival.



Undergraduates



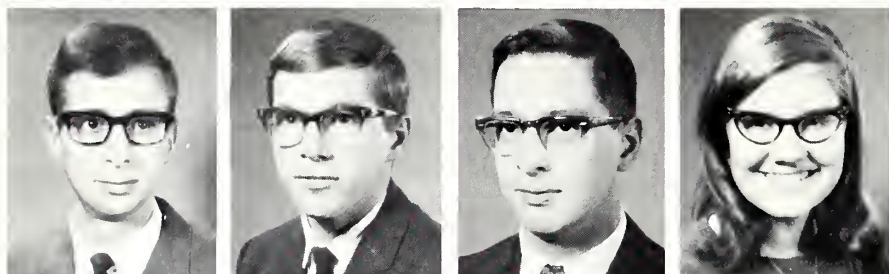
Allen R. Wedel, Newton sophomore; **Allen S. Wedel**, McPherson special; **Cynthia Wedel**, Moundridge freshman; **Franklyn Wedel**, Le-high freshman.



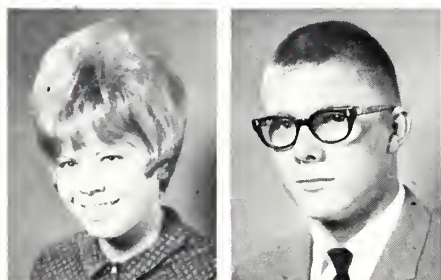
Elizabeth Wenger, Newton junior; **Joseph White**, Hesston junior; **Doris Wiebe**, Sterling, Ida. junior; **Frank Wiebe**, Beatrice, Neb. freshman.



ElRoy Wiens, Inman freshman; **Pamela Wiens**, Inman freshman; **Robert Wiens**, Inman sophomore; **Jon Woelk**, N. Newton freshman.



Allen Yoder, Hutchinson junior; **Darvin Yoder**, Kalona, Iowa junior; **Loran Yoder**, Kalona, Iowa junior; **Janette Zercher**, N. Newton junior.



Ann Zerger, Kingman sophomore; **Richard Zerger**, McPherson sophomore.

Seniors Not Pictured

Marie Boldenow, Newton, elementary education; **Wilbur Entz**, Newton, chemistry; **Larry Horner**, West Liberty, O. elementary education; **Maxine Hall**, Cheney, elementary education; **Joran Mbebe**, Tanzania, E. Africa, elementary education; **Kathleen Perkins**, Newton, elementary education; **Frances Schrag**, Pretty Prairie, elementary education; **Joe Solis**, Newton, sociology; **Kathrine Young**, Newton, elementary education.

Index

INTRODUCTION 1-11

FEATURES 12-55

- Art exhibits 23, 33, 49
 - Akar, John 26
 - Awards 53
 - Buffalo Barbecue 52
 - Campus views 29
 - Chapels 28
 - Christmas banquet 33
 - Civic chorus 32
 - Coffee house 47
 - Debate 41
 - Dick, James 49
 - Dinny and the Witches** 15
 - Dunkelberger music dedication 27
 - Final examinations 31, 51
 - Finnigan, Jack 40
 - Folk festival 42-43
 - Freshman get-together 15
 - Gianni Schicci** 25
 - Graduation 54-55
 - Groundbreaking for new dorm 39
 - Guidance Counselors Day 31
 - Homecoming 20-22
 - Holy Week 40
 - Inauguration 36-38
 - Initiation of freshmen 16
 - Inn 50
 - Italian Chamber Ensemble 27
 - Junior-Senior Banquet 53
 - Kingston Trio 52
 - Kloepfer, H. Werner 45
 - London Graphica Arts 47
 - Madrigals 47
 - Menno Simons lectures 26
 - Old Maid and the Thief** 24
 - Open house 17
 - Peace Walk 30
 - Registration 14
 - Rockwell, Lincoln 50
 - SCF retreat 16
 - Telelectures 45
 - Trojan Women** 44
 - Twelfth Night** 34-35
 - Trouble in Tahiti** 51
 - Work Day 31
 - Wuppertal Exchange Program 46
 - Zoo Story** 23
- ### SPORTS 56-73
- Basketball 63-67
 - Football 58-62
 - Golf 71
 - Intramurals 73
 - Tennis 70
 - Thresherettes 72
 - Track 68-69
- ### ORGANIZATIONS 74-99
- Art Club 95
 - Beta Kappa 96

- Chapel Choir 40, 86
 - Cheerleaders 93
 - Church Workers' Fellowship 79
 - Circle K 97
 - College Choir 89
 - Collegian**—newspaper 83
 - Educational Policies Comm. 92
 - French Club 99
 - German Club 90
 - Home Economics Club 81
 - Instrumental Ensembles 88
 - International Relations Club 98
 - Letter Club 48, 94
 - Madrigals 47, 86
 - Math Club 85
 - Men's Governing Council 80
 - Music Educators National Conv. 91
 - Organ Guild 95
 - Peace Club 30, 78
 - Philosophy Club 99
 - Planning and Development Comm. 87
 - Rec. Council 95
 - Religious Life Committee 89
 - Science Hall Club 98
 - Secretarial Club 85
 - Social Workers Club 97
 - Student Christian Fellowship 84
 - Student Council 76-77
 - Student National Educators Assoc. 91
 - Student Policies Committee 84
 - Student Union Board 87
 - Student Wives 81
 - Telelecture Committee 45, 79
 - Thresher**—yearbook
 - Wuppertal Committee 46
- ### ACADEMICS 100-113
- Administration 102-106
 - Faculty 107-111
 - Staff 112-115
- ### STUDENTS 116-144
- Seniors
 - Underclassmen and specials

In conclusion

Before this book is finished, I would like to thank those people who really made it all possible.

First of all, a big thanks to the staff members, especially the photographer, Ralph Roberts. Thank you's also to Albert Morse Studio. The Newton Kansan, Mennonite Weekly Review, and the Publication Relations office for the pictures in the book. And finally thank you to the Mennonite Press at North Newton.



